

Ford SYNC & Reverse Cameras – How to tell which version you have

FORD SYNC 1

In September 2007 Ford introduced their new SYNC infotainment system to connect to a phone for calls and audio by Bluetooth and show basic information such as caller ID and song titles. Original versions of SYNC 1 run on a monochrome screen and cannot be connected to a reverse camera.



Some later versions of SYNC 1 have a colour screen and can show optical parking sensor information or a reverse camera feed. There are two versions with a colour screen, which effects which parts you need to fit a reverse camera. Either will need coding to recognise a connected reverse camera.



Ford SYNC & Reverse Cameras – How to tell which version you have

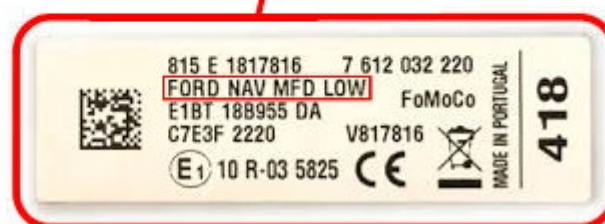
The most common version with a colour screen uses [27-235](#) which connects into the small latched connection directly on the back of the screen – as below. If the vehicle does not have navigation but does have a colour screen then it will use this part.



Some SYNC 1 systems with navigation are the FORD NAV MFD LOW system which has a green LVDS connection on the back. The interface cable to fit a reverse camera to this version of SYNC 1 is [27-239](#). The only way to know for certain which version you have is to remove the screen and check if the camera connection is there and the build sticker on the underside as can be seen below.



**REAR VIEW CAMERA
CONNECTION SOCKET**



SYNC 1 has started to be phased out with the last European vehicles with this system being the Ford Transit and its Custom and Connect siblings before their facelift in late 2018

Ford SYNC & Reverse Cameras – How to tell which version you have

FORD SYNC 2

In 2010 Ford Released SYNC 2, which uses a touchscreen and a Microsoft operating system, on some vehicles starting with the Focus and the C-Max in Europe. It is easily distinguishable by the 8" colour display which was split into 4 distinct sections for phone, entertainment, navigation and climate control. Our harness (Part [27-317](#)) will connect a reverse camera to an original SYNC 2 head unit which then needs coding to recognise the input of a reverse camera.



In North America SYNC 2 was branded as MyFord Touch on a wide range of its cars, vans and pickup trucks. It is also used on Lincolns, branded as MyLincoln Touch.

Ford SYNC 2 also made it into the last 2014-2016 model years of the Ford Falcon (FG X) and Territory (SZ II) built by Ford Australia.

As of 2016 SYNC 2 was discontinued on new models and replaced with SYNC 3 on high end cars, while lesser models continued with SYNC 1.

We don't sell the parts to upgrade a SYNC2 to a SYNC 3.

Ford SYNC & Reverse Cameras – How to tell which version you have

FORD SYNC 3

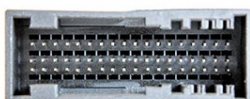
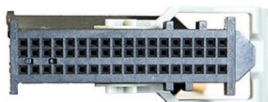
SYNC3 was released in 2016, initially on the Fiesta on Zetec level trim and above. SYNC 3 runs on either a 6.5" or 8" touch screen and is quickly distinguishable by having 5 icons at the lower edge of the screen as can be seen below. Like SYNC 2, this uses [27-317](#) harness and requires coding to recognise the reverse camera.



SYNC 3 is now found on a range of vehicles, some have it all built into the screen, while others have a separate module behind the glove box and the screen on the dashboard is only a peripheral input device.

If your vehicle is built from 2018 onwards, take great care in deciding if it is equipped with SYNC 3 or SYNC 2.5 before deciding on the products you need. The two look very similar but do not use the same connections for any of the radio functions.

A SYNC 3 will use a large latched connection to connect to the car as seen below:



Ford SYNC & Reverse Cameras – How to tell which version you have

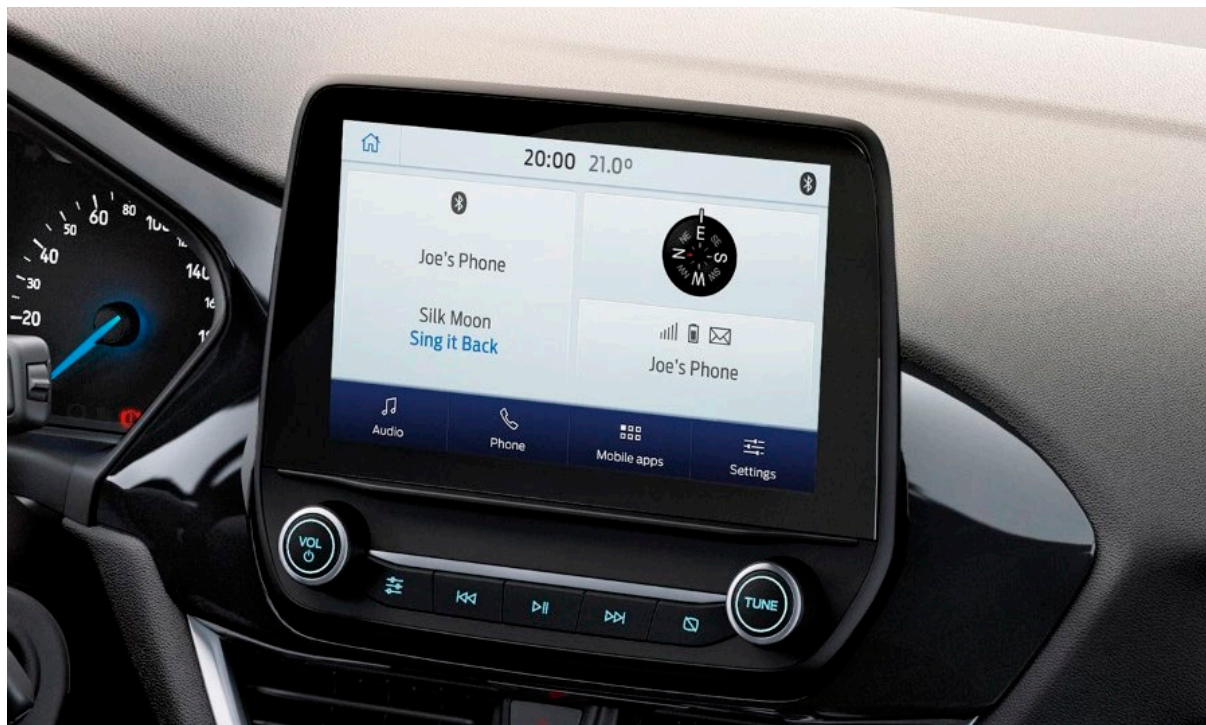
FORD SYNC 2.5

In late 2018, coinciding with the facelift of the Transit and Transit Custom, Ford released a very similar system to SYNC 3 which has since been dubbed SYNC 2.5.

This is difficult to spot as even in marketing material Ford has not differentiated between the two systems, yet behind the screen they have completely different connections. Unlike the SYNC 3 units with its latched connection (either on the screen or on a separate module) SYNC 2.5 uses two square connections directly to the back of the screen as can be seen below:



The first way to tell if you have SYNC 2.5 if you haven't yet removed the screen is to check the number of icons at the bottom of the screen. If it has five then it is SYNC 3, if it has four then next view the 'About SYNC' screen in system settings. Here if it shows 'SYNC 3' then you have SYNC 3 even if you only have 4 icons, if it shows 'SYNC' then you have SYNC 2.5.



If still in doubt, remove the screen and check the connections on the rear. The camera interface for SYNC 2.5 is [27-319](#) and requires coding to recognise the reverse camera.