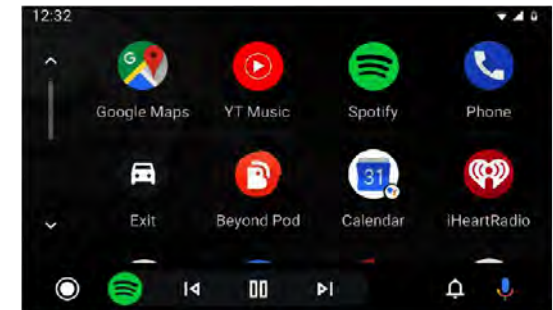
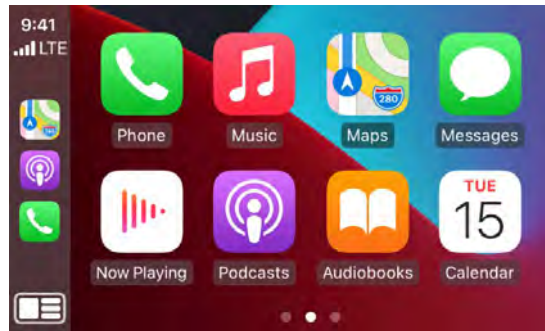


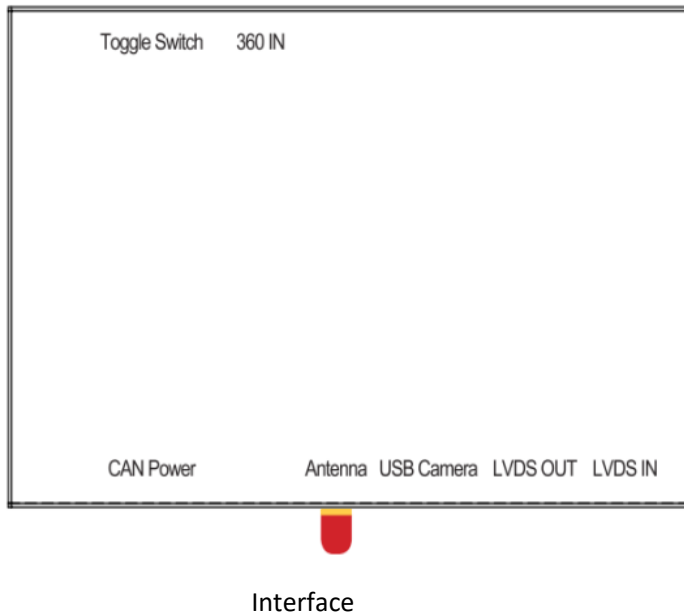
ADZ-MMI3G/C6/IA67/MIB2 installation guide



ADZ-MMI3G/C6/IA67/MIB2 installation guide

AUDI Kit Components

(ALL Variants)



4 pin LVDS Y-Cable



WIFI/ BT Antenna



USB & CVBS Cable

See T-Harness variants on next page.

AUDI Kit Components

T-Harness Variants (model specific)



ADZ-MMI3G
Main T-Harness
HAR-Q5U



ADZ-MIB2
Main T-Harness
HAR-B9



ADZ-C6
Main T-Harness
HAR-C6



ADZ-A67
Main T-Harness
HAR-A7C



ADZ-A8
Main T-Harness
HAR-A8



ADZ-IA67
Main T-Harness
HAR-A6

AUDI MMI (Radio) Locations

Installation for AUDI takes place entirely at the RADIO tuner (CD Player)

BENEATH SCREEN



Most vehicles with
3G MMI or MIB2



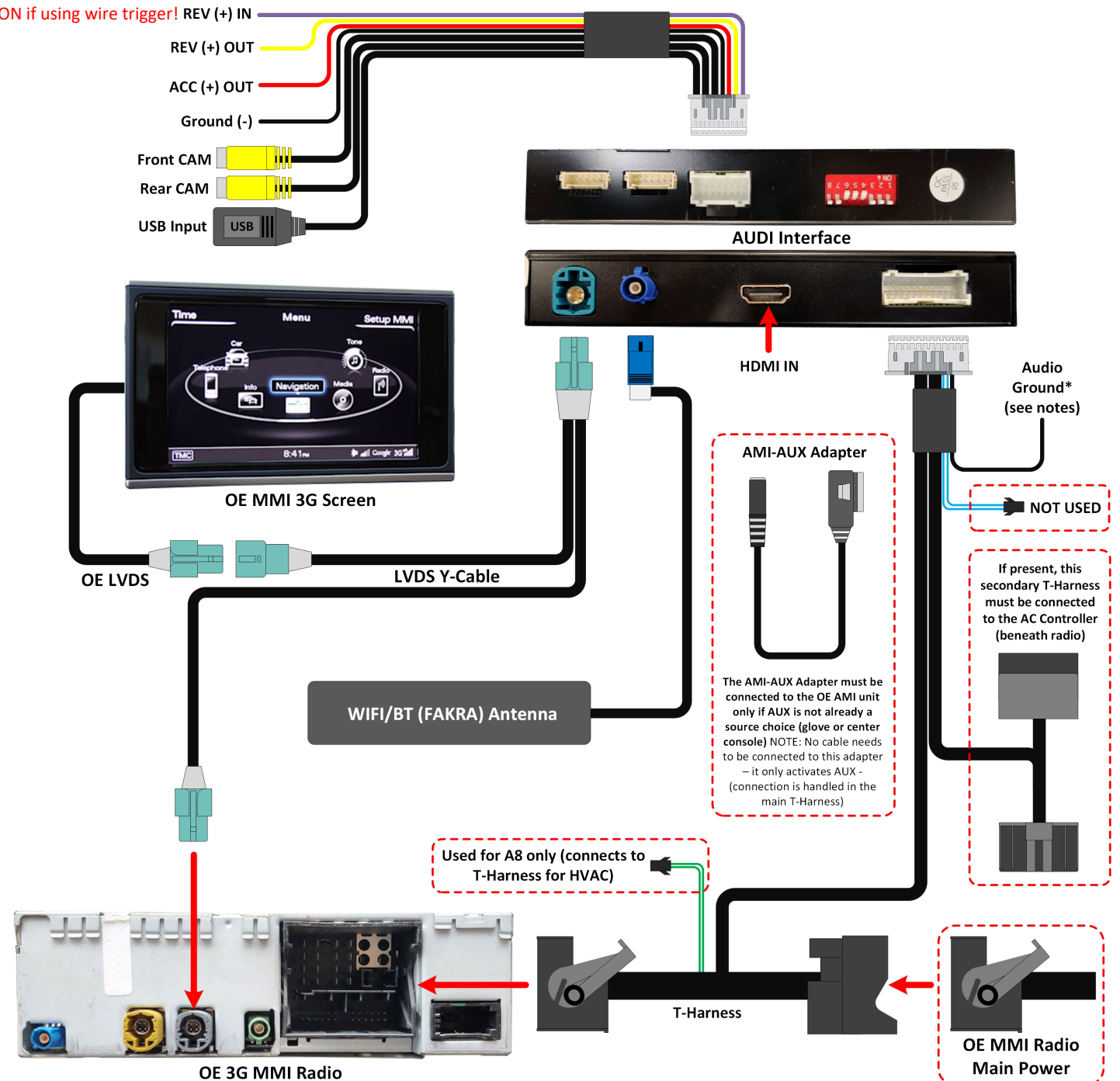
GLOVE
BOX

A3 MIB,

Q5 3G MMI



LINE DETECT must be set to ON if using wire trigger! REV (+) IN



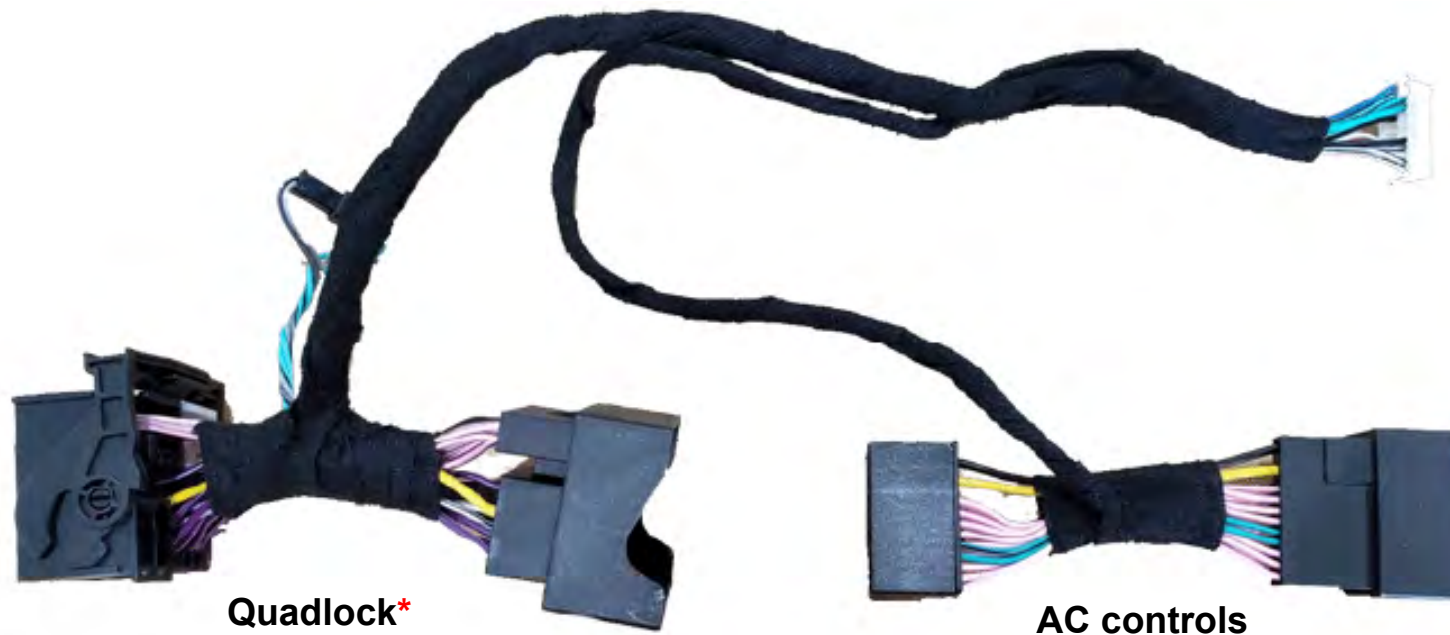
AUDI

CarPlay / Android Auto + Camera input for Audi vehicles
equipped with the 3G MMI / MIB / MIB2 System



NOTE: A4/A5/Q5/A6/A7/A8/Q7/Q3 vehicles - Quadlock is plug and play behind the radio and the secondary plug and play harness plugs into the AC controls.

For Q3-N (nav equipped), the secondary T-Harness (cam lock) is not used.



***If the car is equipped with fiber optic, please remove it from the original quadlock and move it to the supplied plug and play harness.**

AUDI

CarPlay / Android Auto + Camera input for Audi vehicles
equipped with the 3G MMI / MIB / MIB2 System

DIP						Selection of car model	Model
1	2	3	4	5	6		
ON	ON	OFF	OFF	ON	ON	2013-2016 A3 (5.8 inch)	ADZ-MIB2
ON	ON	OFF	ON	ON	OFF	2017- A3 (5.8 inch)	
ON	ON	ON	OFF	OFF	ON	2013-2016 A3 (7 inch)	
ON	ON	ON	OFF	OFF	OFF	2017- A3 (7 inch)	
ON	ON	OFF	ON	OFF	OFF	2017- A4/S4/A5/S5 (7 inch); 2018- Q5 (7 inch)	
ON	ON	ON	OFF	ON	ON	2016-2018 Q7 (7 inch)	ADZ-IA67 ADZ-MMI3G
OFF	OFF	OFF	OFF	OFF	OFF	2013-2017 Q5 (MMI); 12-16 A4/S4/A5/S5 - 12-15 A6/A7,HURRICAN*	
OFF	OFF	OFF	ON	ON	ON	2009-2012 Q5 (MMI); 2009-2011 A4/S4/A5/S5 (MMI) (some 2012)	ADZ-C6
OFF	OFF	ON	ON	OFF	ON	2010-2011 A6 (C6)	
OFF	OFF	OFF	OFF	ON	OFF	2010-2015 Q7	ADZ-A67
OFF	OFF	ON	ON	ON	ON	2016-2018 A6/A7	
OFF	OFF	ON	ON	OFF	OFF	2014-2018 Q3 with NAV	ADZ-Q3N
OFF	OFF	OFF	OFF	OFF	ON	A8	ADZ-A8
OFF	OFF	OFF	ON	OFF	ON	Without MMI: 2009-2016 A4/A5/Q5	ADZ-NMMI

DIP	ON	OFF
7	Car without parking sensors	Car with parking sensors
8	External microphone	OEM microphone

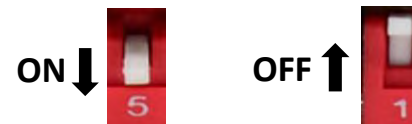
NOTE: If PARK button is ON and sensors are **currently active**, the unit may not switch modes until sensors are cleared.



Factory test DIP setting (No.1~6):

OFF – OFF – ON – OFF – ON – OFF

NOTE! Please reboot the interface for effective after changing any DIP setting.

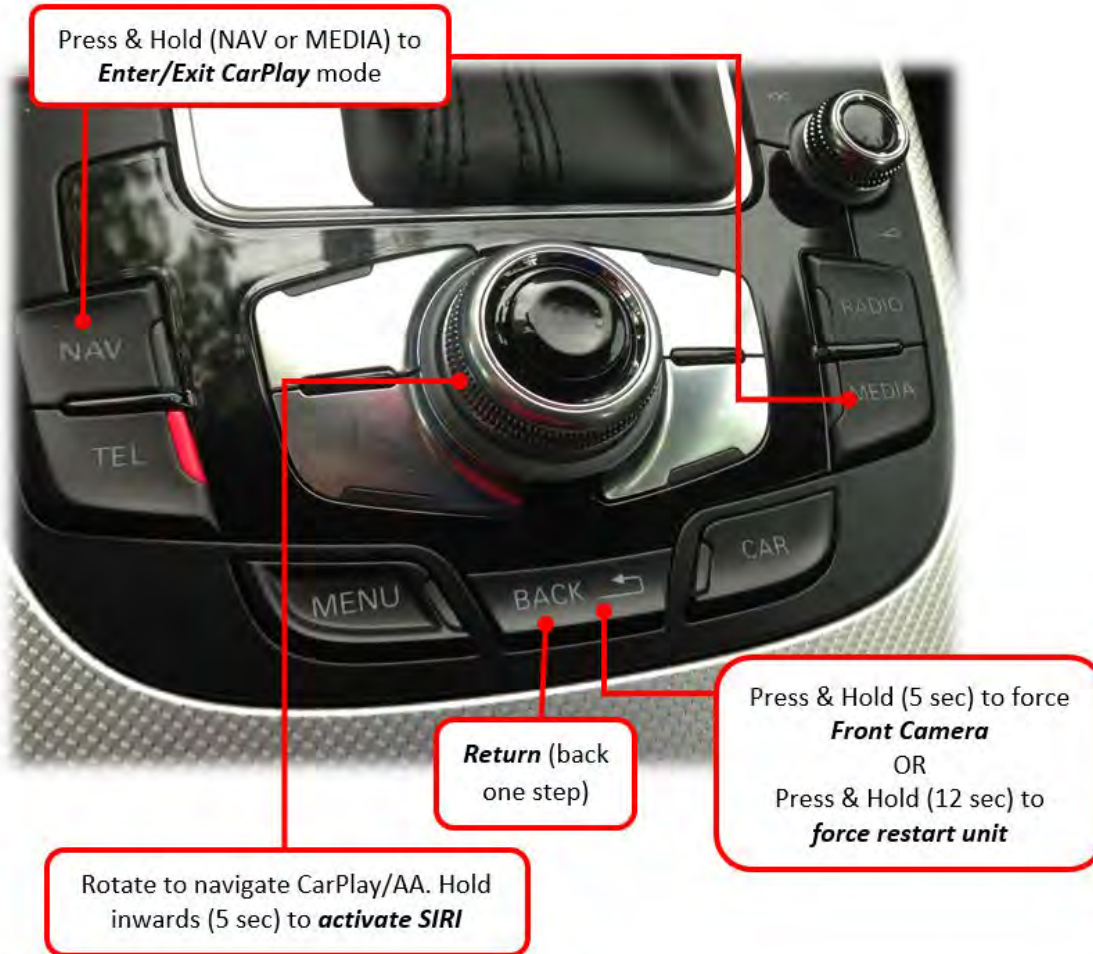


For older HURRICAN, cut yellow (12v batt) wire at module 'CAN' connector, extend to an ACC source. Also, must run reverse wire to violet wire, and change 'REVERSE LINE DETECT' to 'ON' if equipped with OE reverse camera.

AUDI

CarPlay / Android Auto + Camera input for Audi vehicles
equipped with the 3G MMI / MIB / MIB2 System

Operation Instruction:



ATTENTION: With the latest system software
(3.6.13), use OEM Bluetooth streaming (source) for all
audio playback from CarPlay/Android Auto.

Select AUX input
in order to get
audio input



NOTE! Make sure switch to OEM Bluetooth (preferred) or AUX mode
on original car stereo for audio before using the CarPlay integration.



NOTE! If a car **without**
AUX jack but with AMI,
please plug in an AMI
cable to factory AMI port,
and do not connect
anything with another
side of the cable.

• How to connect to Apple CarPlay / How to setup Bluetooth Phone Calls

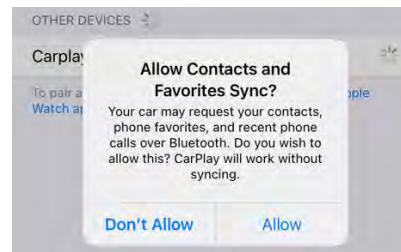
1. If you would like to use a cable to connect your iPhone, please use a certified Apple cable.
2. If you would to use a wireless connectivity, please follow the next steps.
3. Before pairing the iPhone with the system, please make sure you do a "hard reset" on the phone in order to prevent any malfunction. (Check phone manual/online)
4. Once you are done with the previous step go to Settings > Bluetooth and the phone should be able to find a Bluetooth device called CarPlay8***** under the Other Devices.



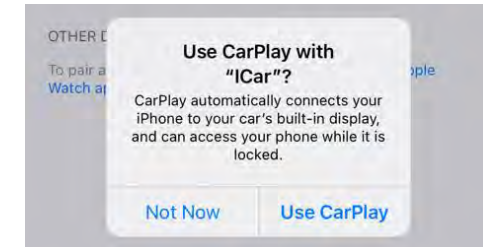
4. Select CarPlay8***** and a Bluetooth Pairing Request will be displayed on the screen with a code. Select "PAIR".



5. Right after the Pairing notification a new request to Sync your contact with the car will be displayed. Select "ALLOW" in order to have caller ID and access to your contacts through CarPlay.



6. A notification asking for a permission to connect your iPhone to the car even when the phone is locked will pop up. Select "Use CarPlay" and the CarPlay main screen should show up on the factory radio screen.



7. When the phone is connected push and hold the MEDIA/NAV button for 2 seconds to switch to CarPlay.

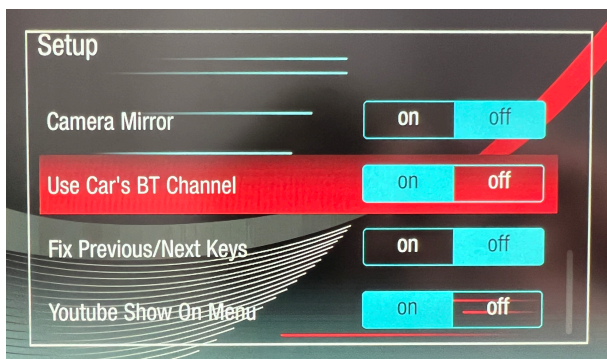
Bluetooth Phone Calls

Please access the Main Menu of the Interface, by selecting the **yellow tile**, and then go to **SETUP > USING CAR'S BT CHANNEL** and make sure that option is **ON**. After that go back to the main screen and RETURN to CarPlay/Android Auto. **On the phone, please make sure the device is paired with the factory AUDI Bluetooth as well as the unit.**

When using the system, you must be in Bluetooth Audio source (not AM, FM, AUX or any other source) in order to hear audio from CarPlay/AA. If the vehicle is not factory-equipped with Bluetooth, you must use AUX for the audio source (and BT Channel must be turned OFF).

Audio Playback Options

To change these settings, you must access the interface main menu. Go to >SETUP and scroll towards the bottom of the list. If 'BT Channel' does not exist, your system is out of date and needs to be updated. Contact for more information.

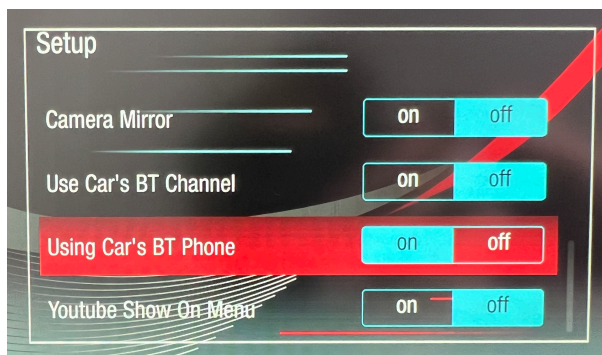


Use Car's BT Channel (ON):

Sends all CarPlay/AA audio (music & telephony) directly to **factory radio's Bluetooth stream source**.

NOTES:

- Not all vehicles will be equipped with Bluetooth streaming - verify before using
- Phone must remain (Bluetooth) connected to the factory radio for phone calls & music
- Use **BT Audio** source (not AUX!) to hear music from CarPlay/AA
- Adjusting this feature (ON or OFF) will reboot the unit once



Use Car's BT Phone (ON): Sends CarPlay/AA **music** to AUX, but **telephony** to factory radio's Bluetooth system for phone calls only.

NOTES:

- Phone must remain (Bluetooth) connected to the factory radio for phone calls only
- Use **AUX Input** source (not Bluetooth Audio!) to hear music from CarPlay/AA
- Answer incoming phone calls **from the steering wheel pickup button** for best results
- Place outgoing phone calls using SIRI/Voice command for best results



Use Car's BT Channel & Phone (OFF): Sends 100% of the audio from CarPlay/AA to the AUX input - including phone calls.

NOTES:

- Connection to factory Bluetooth not required
- May cause echoing during phone calls - MIC settings inside 'AUDIO' section available for adjustment
- Must use this setup for Phone Mirroring feature for sound from phone when mirroring

AUDI

CarPlay / Android Auto + Camera input for Audi vehicles equipped with the 3G MMI / MIB / MIB2 System



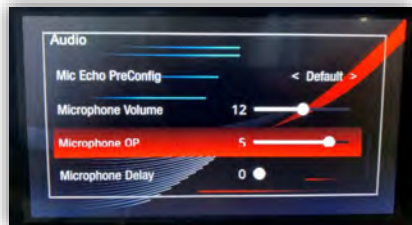
Audio provides audio level controls for the interface:
(Global Vol level, Music, Speech and Alert volumes are all separated out specifically for tuning the interface for the best user experience).



An array of **Microphone** settings are used specifically when using the provided system microphone. *recommends using the OEM Bluetooth system whenever possible for hardware (and in that case, these settings don't apply)*. In some cases where the provided microphone is required, follow these steps to reduce echo delay (OR run 'AEC Auto Setup' below):

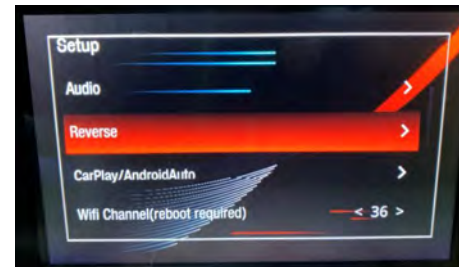
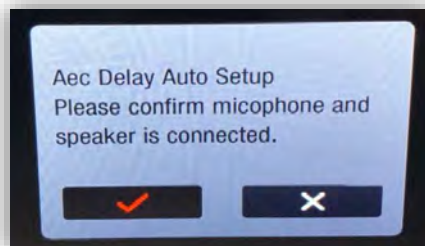
Before beginning, be in AUX mode, someone must be on the phone with you (outside of vehicle) to test, start the car and roll all windows up:

1. Bring **Microphone OP (gain)** down as low as possible, to the point where you can still hear them clearly (typically 1-3)
2. Start **Microphone Delay** at 0, bring up 1 detent at a time, testing audibly while you increase this setting (say: 'testing 1, 1, 1, 1', then 'testing 2, 2, 2, 2' as you go, etc). Stop when echo goes away.
3. Re-test the phone call after complete at different (OE) volume levels.



AEC Auto Setup will attempt to run an echo delay test automatically.

For this test you cannot be on the phone to begin with, it uses a series of tones to determine how to adjust settings based on the interior of the vehicle.



Reverse configures all camera options, whether aftermarket or OEM.

Reverse Camera should be default set to 'Original' for OE camera, or select 'Aftermarket' if adding a reverse camera.

Reverse Line Detect activates the wire trigger (violet) for reverse camera (used for manual transmissions typically), found on the USB Media Harness. With this feature ON, it may also disable the reverse (over CAN data) command.

Reverse Display Track designates whether or not to display dynamic guidelines on the reverse image (aftermarket cam only).

Reverse Display Radar is only used when the vehicle is equipped with OE reverse sensors (typically it will show a visual radar screen next to the rear camera image screen).

Front View Time sets the length of time an added front camera (to Front RCA input) will show after leaving reverse gear.

Reverse Match Original adjusts the positioning of reverse screen to match original camera location.

Match 360 Display, or **Ignore 360 State** (vehicle dependent) relates to any vehicle with multiple cameras. Adjust this show those stitched or side cameras when in CarPlay/AA mode not. This feature is typically OFF.



AUDI

CarPlay / Android Auto + Camera input for Audi vehicles equipped with the 3G MMI / MIB / MIB2 System



Carplay/Android Auto has adjustments for the CarPlay screen positioning (overall) and other rarely used CarPlay/AA screen features.

Left Scrap shifts the CarPlay/AA screen to the left in small increments.

Right Scrap shifts the CarPlay/AA screen to the right in small increments.

Top Scrap shifts the CarPlay/AA screen upwards in small increments.

Bottom Scrap shifts the CarPlay/AA screen to the downwards in small increments.

Auto Dark Mode dims the CarPlay/AA screen based on the Phone's current setting (or gets ignored).

Enable Carplay U/D Key changes certain CAN commands, DO NOT USE THIS FEATURE.



Back in Setup, **Wifi Channel (reboot required)** sets the WIFI channel used to connect to the phone. If all other factors have been checked (antenna placement, Low Data Mode off, etc) and you're still having wireless connectivity problems:

1. On the phone, reset phone network settings: **SETTINGS>GENERAL>RESET>RESET NETWORK SETTINGS**
2. On the interface: Set **Wifi Channel (reboot required)** option to '6', then reboot and test.

Wheel Key Swap will adjust the CarPlay/AA navigation controls from UP=UP to UP=DOWN and from LEFT=LEFT to LEFT=RIGHT. **NOTE: this is not supported in every vehicle.**

Touch Pad/Remote Lever (Lexus only):

Mini Touch Pad > For vehicles with TOUCH PAD

Remote Lever > For vehicles with Joystick

Using Car's BT Phone: As of SW version 3.6.13, this setting should no longer be used.

Using Car's BT Channel: As of SW version 3.6.13, this setting should be turned ON for every installation (unless the vehicle does not come equipped with OEM Bluetooth). Once turned ON, use OEM Bluetooth Audio source for all sound from the unit. This is how always suggests to use these systems (for hardware).

HiCar map confirmation: This setting is never used in N.A. – leave OFF and ignore.

