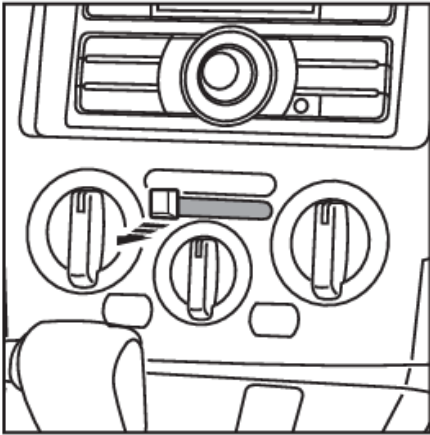


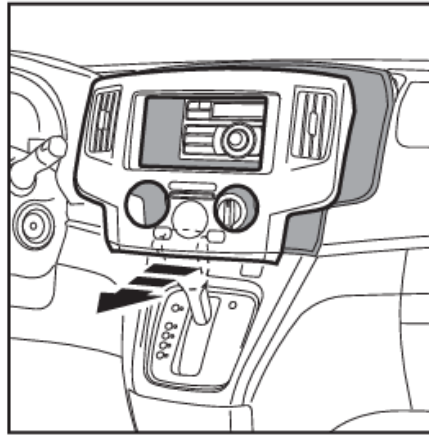
Before installing make sure ignition supply to the vehicle is switched off !

Dashboard Disassembly

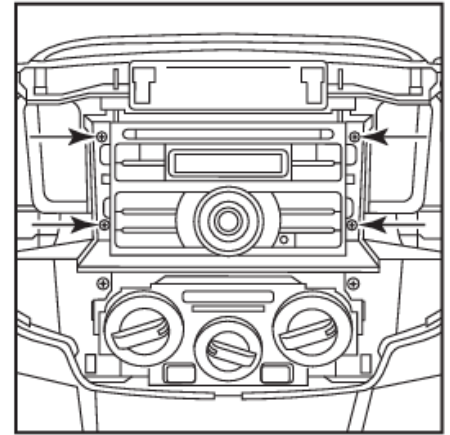
1. Unclip and remove the recirculate/ fresh slide button. (Figure A)
2. Unclip and remove the entire panel surrounding the radio including the a/c vents. (Figure B)
3. Remove (4) Phillips screws securing the radio. (Figure C)



(Figure A)



(Figure B)



(Figure C)

Assembling the patch lead (29-025)



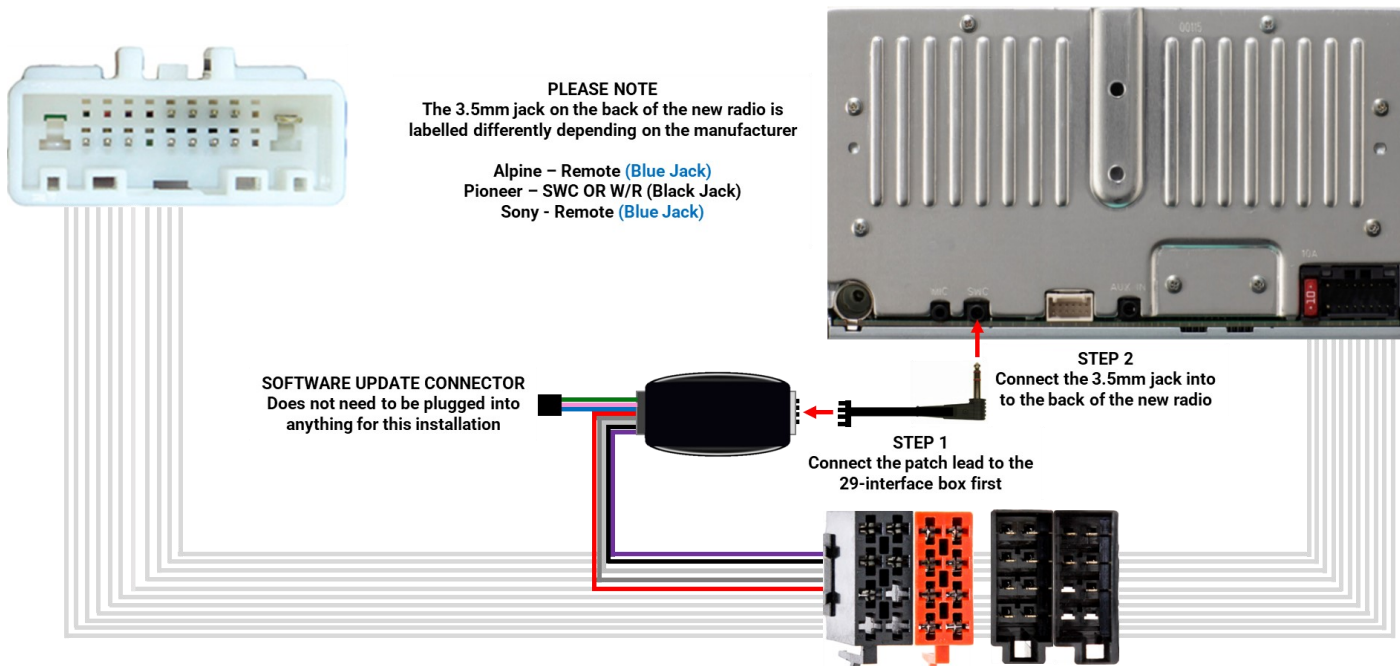
Look at the diagrams

1. Look at the diagrams below
2. Use either the 3.5mm jack plug or the single Brown wire in pin locations 1,2 & 3
3. Use the link leads to suit the type of head unit you are fitting.
4. Carefully lift the latch on the plastic housing to remove a link lead

<p>29-000 CHINESE 2 WIRE LEARNING</p> <p>PIN 1 (BROWN WIRE) from lead goes to SWC1/KEY1 on Chinese/Unbranded radio</p> <p>PIN 2 (GREY WIRE) from lead goes to SWC GND/GROUND on Chinese/Unbranded radio</p> <p>BROWN - PIN 1, GREY - PIN 2 No links Use one of the links on the grey wire</p>	<p>29-001 ALPINE 3.5MM JACK</p> <p>RED - PIN 1, BLACK - PIN 2, WHITE - PIN 3 Link 9 & 10</p>	<p>29-003 CLARION 3.5MM JACK</p> <p>BLACK - PIN 2, WHITE - PIN 3 Link 5 & 6 and 11 & 12 The red wire is not used</p>	
<p>29-004 JVC 3.5MM JACK</p> <p>BLACK - PIN 2, WHITE - PIN 3 Link 11 & 12 The red wire is not used</p>	<p>29-004SW JVC SINGLE WIRE</p> <p>BROWN - PIN 3 Link 11 & 12 3.5mm jack wire is not used</p>	<p>29-005 KENWOOD SINGLE WIRE</p> <p>BROWN - PIN 3 Link 7 & 8 3.5mm jack wire is not used</p>	<p>29-007 PIONEER/ DYNAVIN</p> <p>WHITE - PIN 1, BLACK - PIN 2, RED - PIN 3 Link 5 & 6</p>
<p>29-008 SONY 3.5MM JACK</p> <p>WHITE - PIN 1, BLACK - PIN 2, RED - PIN 3 Link 7 & 8 and 9 & 10</p>	<p>29-011 ZENEC SINGLE WIRE</p> <p>BROWN - PIN 3 Link 5 & 6, 7 & 8 and 9 & 10 3.5mm jack wire is not used</p>	<p>29-012 PHILIPS SINGLE WIRE</p> <p>BROWN - PIN 3 Link 5 & 6, 9 & 10 and 11 & 12 3.5mm jack wire is not used</p>	<p>29-016 CHINESE 3.5MM JACK</p> <p>WHITE - PIN 1, BLACK - PIN 2 No links Red wire is not used</p>

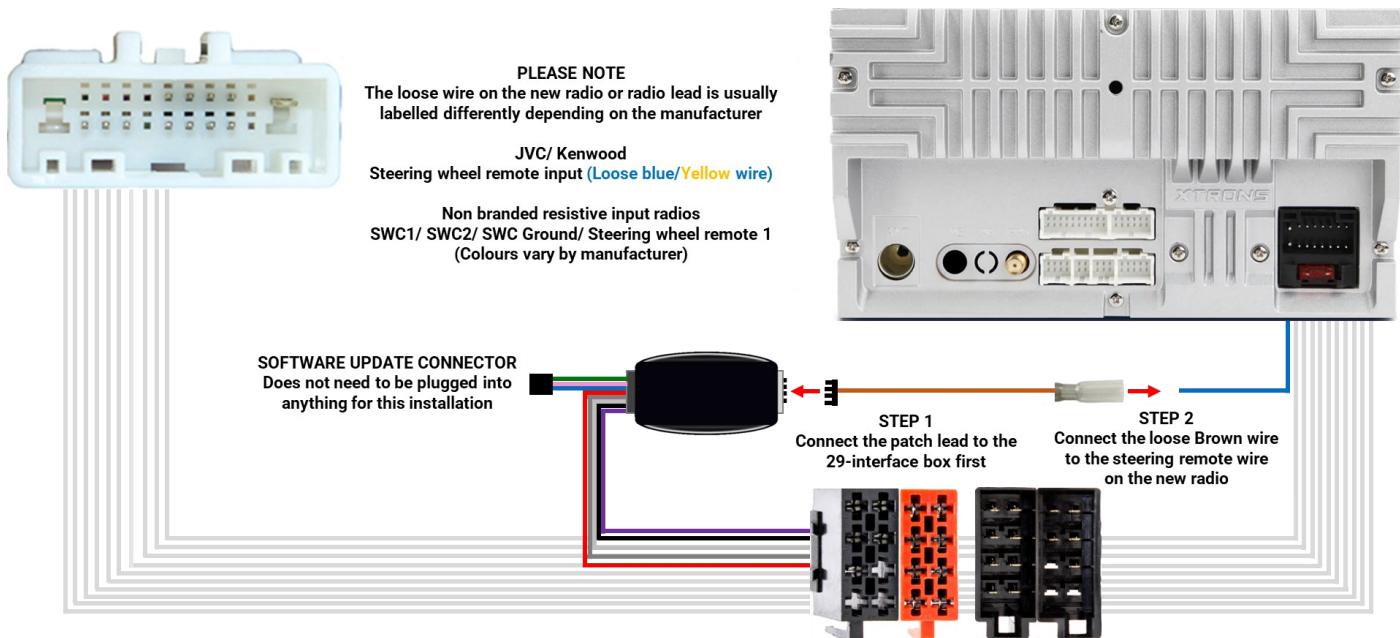
Connecting the patch lead (3.5mm Jack)

1. Connect the patch lead to the 29-Series interface controller before connecting anything else
2. Connect the 3.5mm jack to the back of the new aftermarket head unit. This is labelled differently depending on the brand of head unit, For e.g. Alpine/ Sony is usually labelled Remote, Pioneer SWC or W/R. Please refer to the manufacturers instructions to confirm this
3. Some interface boxes will have a 4-pin connector branching from the interface. This is the connector for the software update controller and does not need to be plugged into anything for the installation.



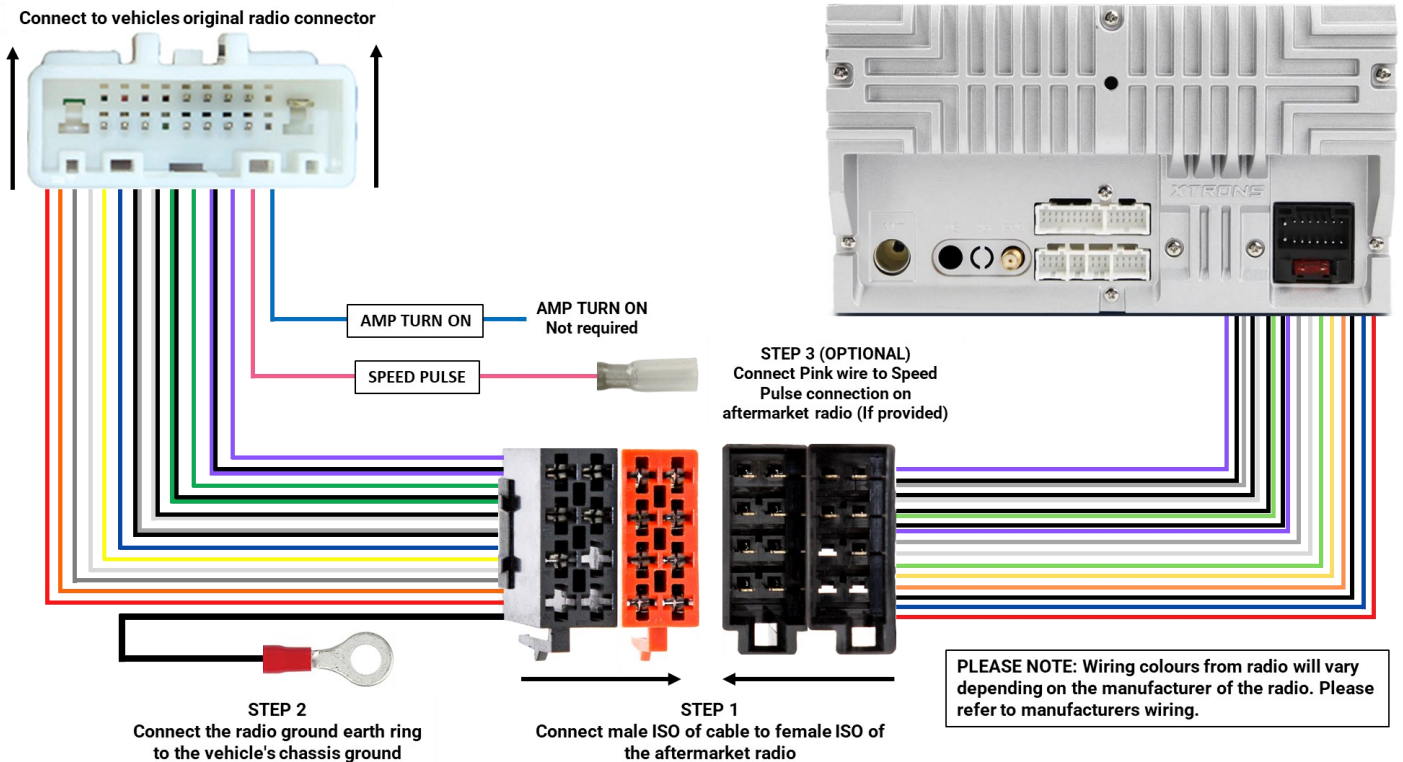
Connecting the patch lead (Loose Wire)

1. Connect the patch lead to the 29-Series interface controller before connecting anything else
2. Connect the loose brown wire to the steering remote wire on the new radio, this can either be on the back of the new aftermarket head unit or on the new radio cable. This is labelled differently depending on the brand of head unit. Please refer to the manufacturers instructions to confirm this
3. Some interface boxes will have a 4-pin connector branching from the interface. This is the connector for the software update controller and does not need to be plugged into anything for the installation.

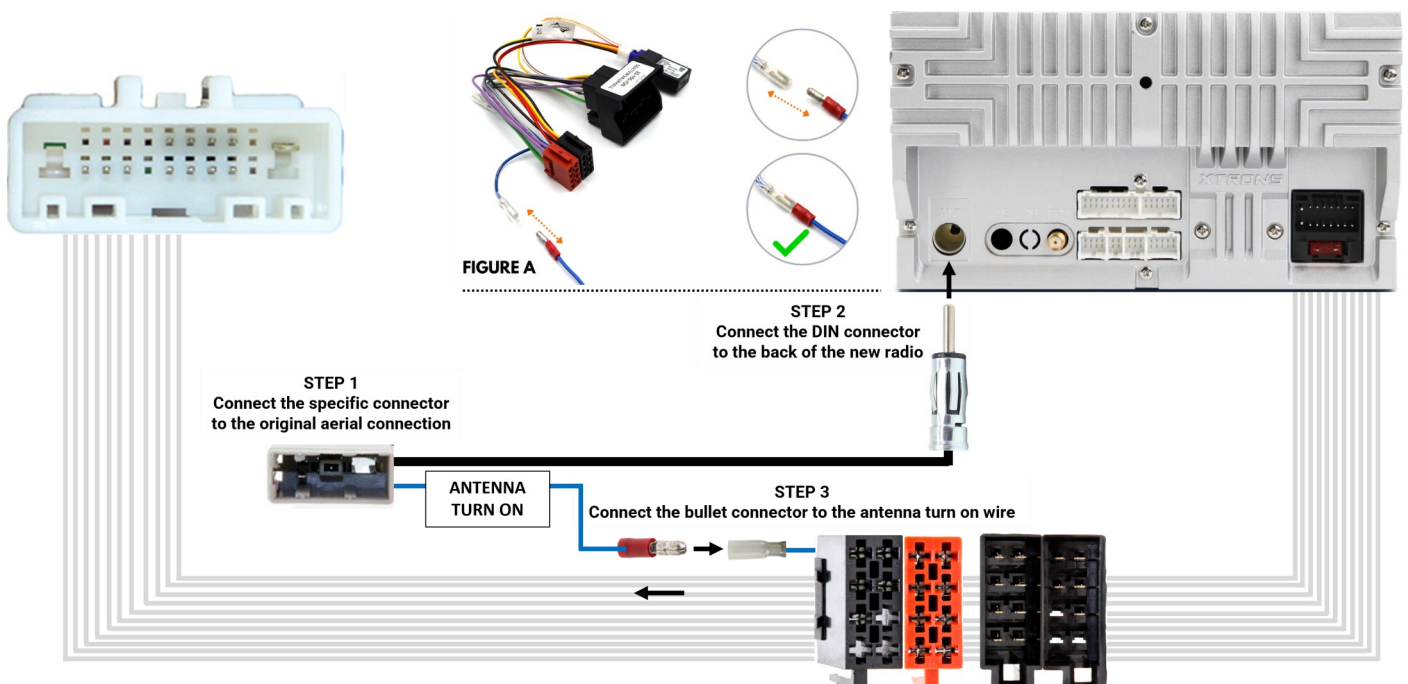


Steering wheel control interface (29-671) installation

1. Connect the black and brown male ISO connections to the corresponding female ISO connections from the back of the radio. If your radio has loose wires rather than ISO connections, please use an ISO adapter such as a Incartec 20-022 to add them to your radio.
2. Connect the vehicle specific connectors into the cars original wiring. Connect the ground loop that is attached to the harness (the main earth lead for the radio) to a chassis ground on the vehicle.
3. If your aftermarket radio has a speed pulse output then connect this to the Pink Speed Pulse on the steering wheel control interface.
4. The amplifier turn on cable is only to be used for amplified sound systems and so is not required.



Antenna adapter (21-118K) installation



Camera retention (27-246) Install

1. Connect the Yellow RCA connector of the camera interface to the camera input connection on the back of the aftermarket head unit.
2. Connect the vehicle specific connector (24 Pin) to the cars original wiring harness.
3. Connect the loop on the Black wire of the camera interface to a chassis ground on the vehicle.
4. Connect the Purple wire on the camera interface to the new aftermarket head units reverse signal wire. (Please refer to manufacturers instructions)



USB retention (24-252) installation

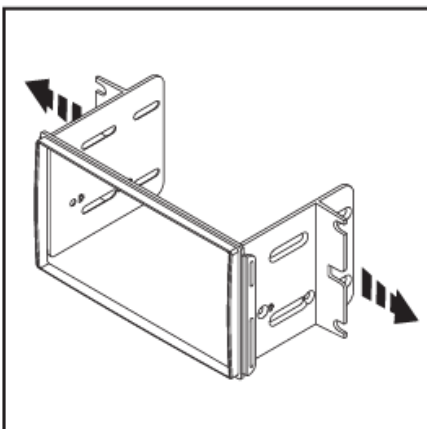
1. Connect the vehicle specific connector to the USB input wire from the original factory radio
2. Connect the White RCA to the aftermarket radios left AUX in (If equipped)
3. Connect the Red RCA to the aftermarket radios right AUX in (If equipped)
4. Connect the USB to the rear of the aftermarket radio (if equipped)



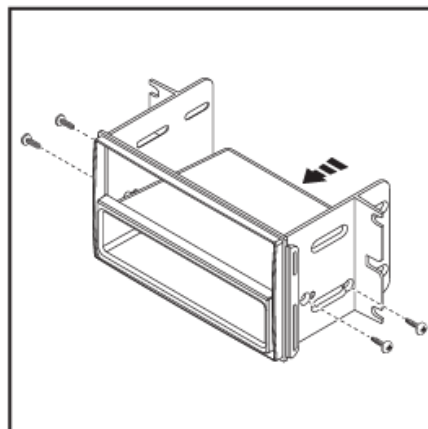
! Test the aftermarket unit fully, ensuring all the functions are working properly before fixing the new head unit into the dashboard !

Aftermarket fascia (50-644) assembly

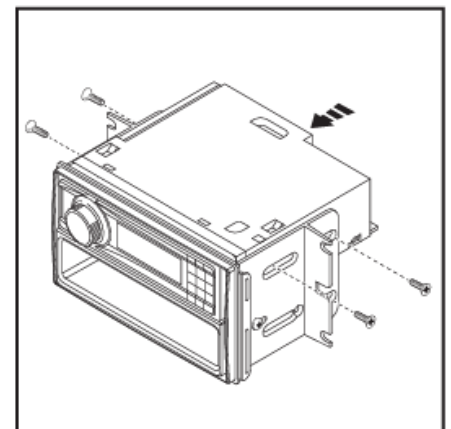
1. Attach the radio brackets to the new radio trim panel (Figure A)
2. If fitting a Single DIN radio, mount the pocket to the bracket/ trim panel assembly with the (4) #8 x 3/8" Philips screws supplied. (Figure B)
3. Slide the radio into the assembly and secure with screws supplied with the radio. (Figure C)
4. Mount the new radio into the dash and reassemble the original panels in the reverse order of disassembly.



(Figure A)



(Figure B)



(Figure C)