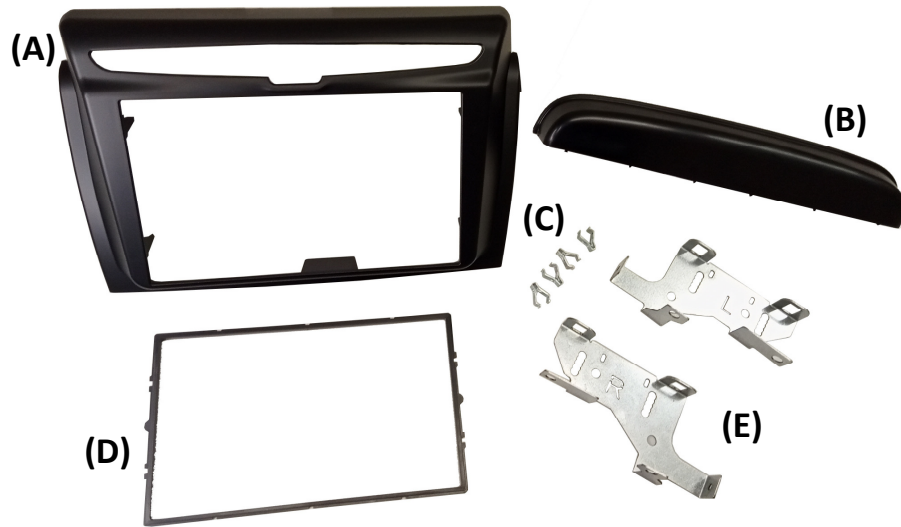
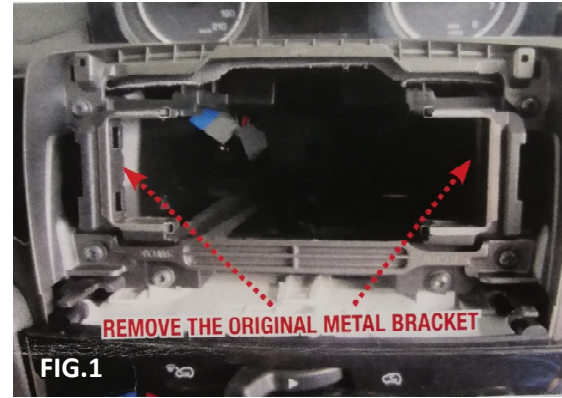


2DIN KIT LANCIA YPSILON 2012>

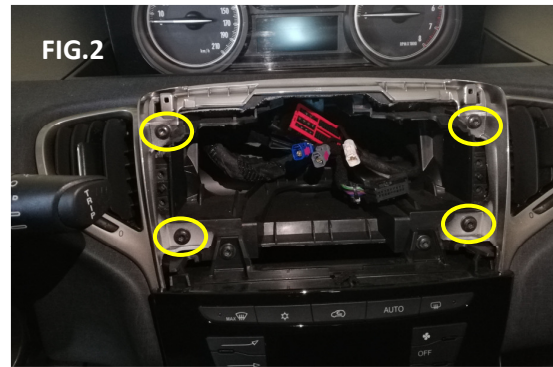


Fascia Kit Contains:

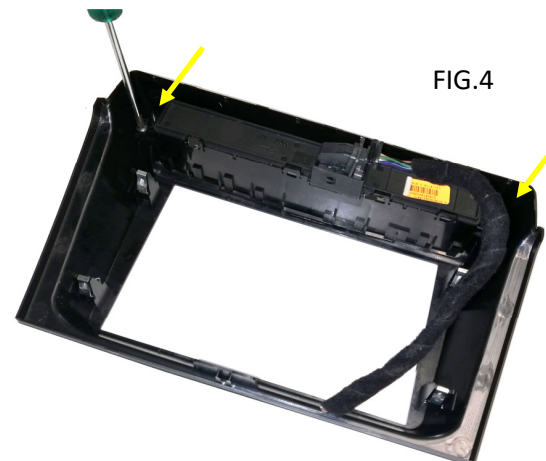
- A → Double DIN (2DIN) Fascia Plate (178x103mm)
- B → Fascia upper part cover
- C → Metal clips
- D → Reduction trim (172x98mm)
- E → Metal brackets



Remove the OEM metal brackets indicated (image Fig.1)



Remove the n.4 OEM screws where indicated (Image Fig.2). The OEM screws will be necessary to fix the Aftermarket kit. After removing OEM brackets and screws the dashboard will be as Image Fig.3



Install the OEM control panel in the aftermarket fascia plate using the screws including into the kit. (Image Fig.4).

Suitable for Installation on above radio types of cars.

FIG.5

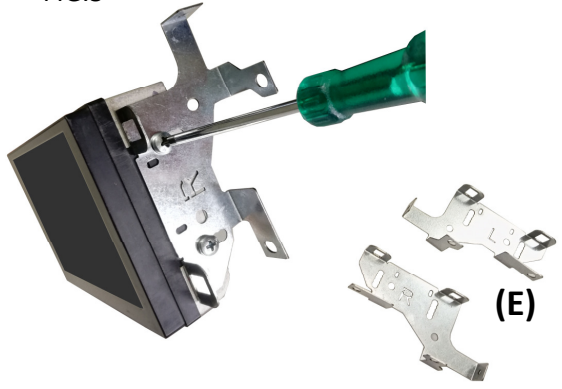


FIG.6



Mount the metal brackets **(E)** on the aftermarket radio (image Fig.5) and adjust the height on the aftermarket fascia **(A)** (Fig.6).
Use reduction frame **(D)** to install 2DIN Radio with dimensions 172x98mm if necessary.

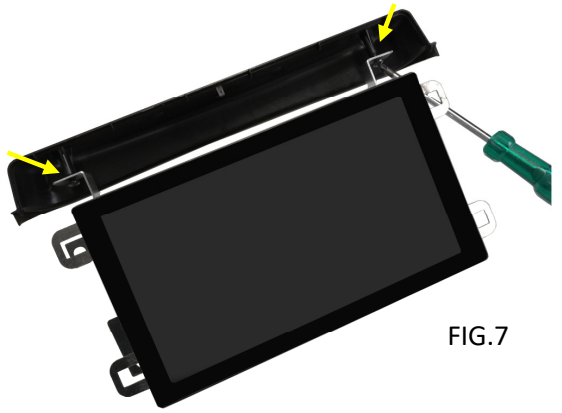


FIG.7

Mount the fascia upper part cover **(B)** to the aftermarket fascia previously adjusted in height and screw to the metal brackets using the n.2 screws supplied.

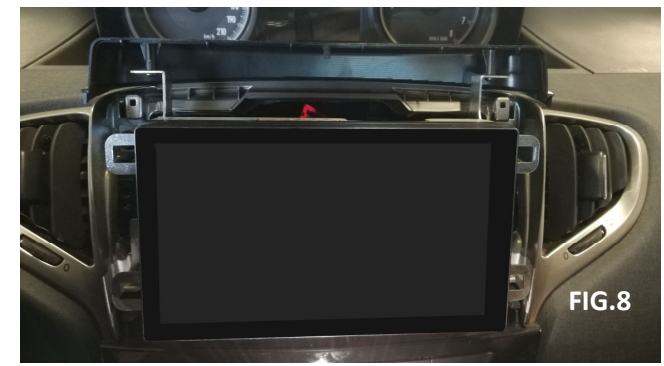


FIG.8

After connecting the aftermarket radio to the car, install the metal brackets complete with radio and upper part cover using the no.4 original screws removed initially.

(Image Fig.8).

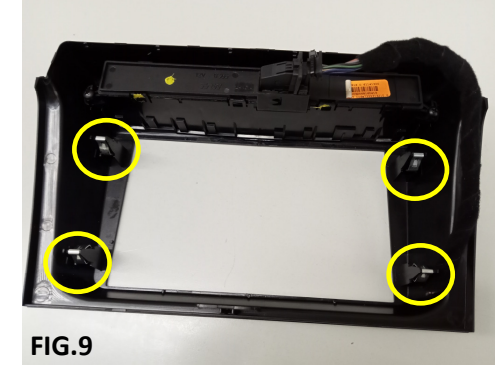


FIG.9



Mount No.4 metal clips **(C)** where indicated in the picture (Image FIG.9)



Connect the cables to the OEM control panel and fix the aftermarket fascia to the metal brackets (Image Fig.10)

IMPORTANT : MAX DEPTH 2DIN RADIO h.55 mm.