

Set the dip switches



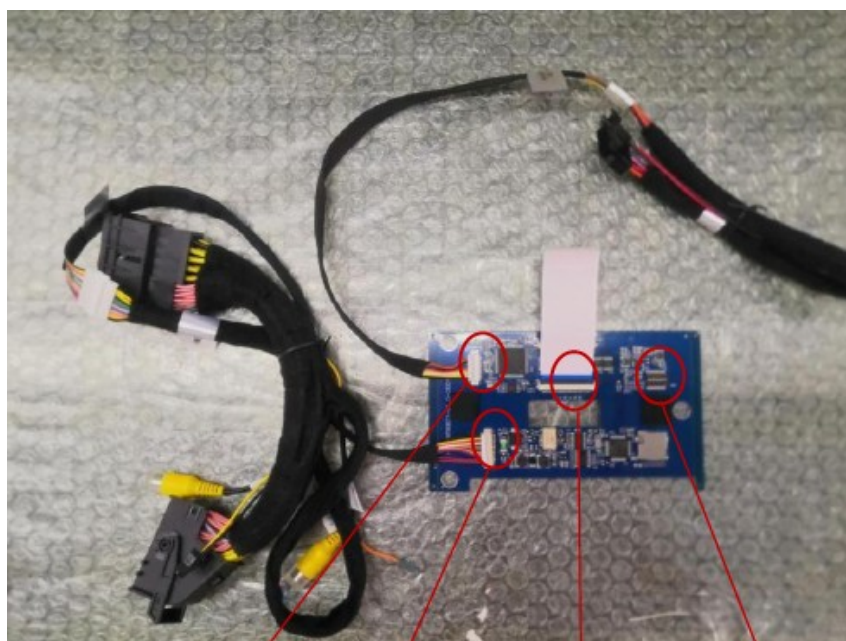
These are on the PCB .The normal setting for rear camera only is all switches off.

If for some reason the screen does not switch to rear camera on engaging reverse then you can manually switch it using the orange wire to cars reverse light. In this instance you will not get any CAN bus generated guidelines).

DIP	ON	OFF
1	Selection of car model	
2		
3		
4	Radar off	Radar on
5	Guidelines off	Guidelines on
6	DVR input on	DVR input off
7	Front cam on	Front cam off
8	OFF	
Long Press "MENU" button to switch to DVR input		

FUNCTION	1	2	3
Mini 6.5" BIS 2018-2020	OFF	OFF	OFF

SETTING	4	5	6	7	8
Aftermarket rear camera	OFF	OFF	OFF	OFF	OFF
Front and Rear	OFF	OFF	OFF	ON	OFF



VGA connector

Power

Ribbon cable to motherboard

Dip switches

Installation of PCB to existing radio

The existing radio needs to be removed and the new PCB is added.

Wire diagram—loose wires

Black—Rear Camera ground

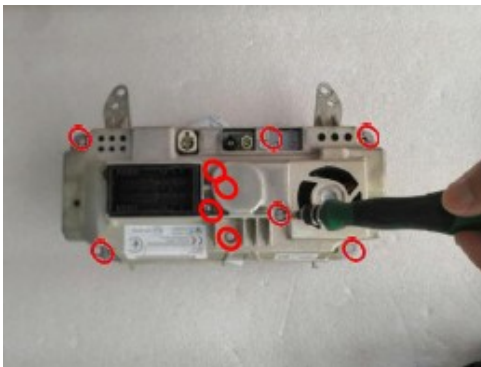
Black—DVR Ground

Orange— 360 detect (manual detect switch)

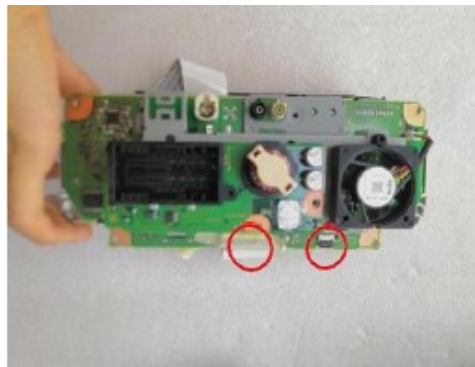
You can use the pink to power the rear camera or use a separate 12v ignition supply. Follow separate instructions for fitting a camera.

Installation of PCB to existing radio

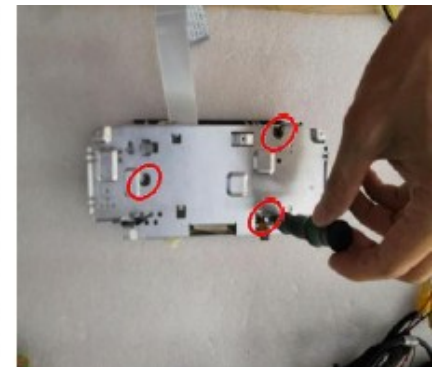
The existing radio needs to be removed and the new PCB is added. There are two screws below the radio and two above (under the top grill).



Unscrew the 10 screws behind radio



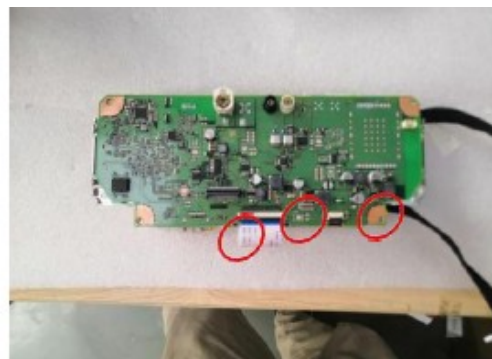
Remove cover, separate the outer PCB



Remove antenna connector from original radio



Stick the new interface PCB to the back of the original radio display



Refit antenna connectors and cables



Refit back cover and connect new power cables