

Volkswagen, SEAT, SKODA Vehicles

Kenwood fitting Instructions.
DMX8021DABS, DMX9720XDS, DNR992RVS, DNX9190DABS,
DNX7190DABS, DNX5190DABS



KENWOOD

Stereo Installation

Step 1.

Remove the existing audio system. Each vehicle may differ.



Step 2.

Screw the side brackets to the left and right side of the radio. This may depend on the radio

Note the position of the bracket should be as shown in the picture to the left

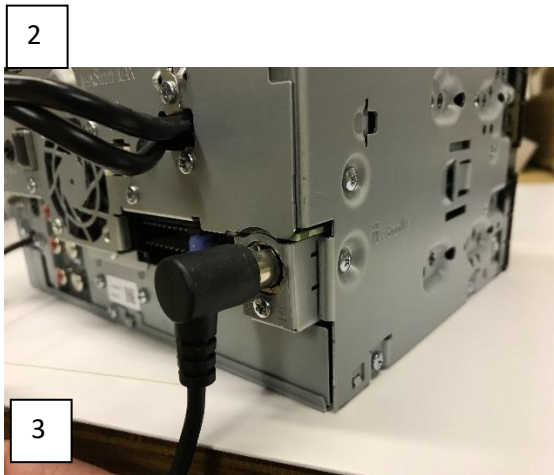


Step 3.

Please connect the Black round multi-pin plug from the Kenwood interface, direct into the Kenwood unit.

Ensure it is the correct way up.

This is a tight plug – ensure it is fully pushed in.





Step 4.

Connect the Kenwood interface quadlock to the vehicle + Connect aerial FM fakra adapter to the vehicle



Step 5.

Connect the GPS antenna

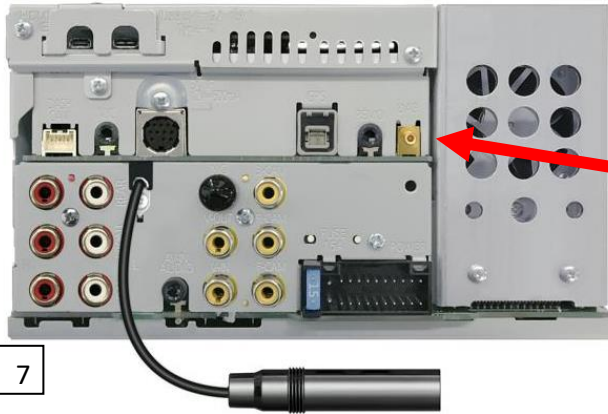
GPS Location: In some vehicle models there is a place for a GPS antenna usually located behind the audio system. The GPS antenna should be mounted onto a metal surface; if you must mount onto a non-metal surface, then use the supplied metal mounting plate. There should be no metal above the GPS antenna (this will block the signal).



Step 6.

Install the Bluetooth microphone on the driver's side A pillar as shown and feed cable through to centre console. Connect microphone to microphone socket marked at rear of Kenwood unit.

Ensure microphone lead follows existing vehicle harness and is positioned behind curtain air bag



Step 7.

Connect the Digital radio antenna lead.



Step 8.

Carefully ensure everything is connected and offer the radio to the dash followed by the new trim.



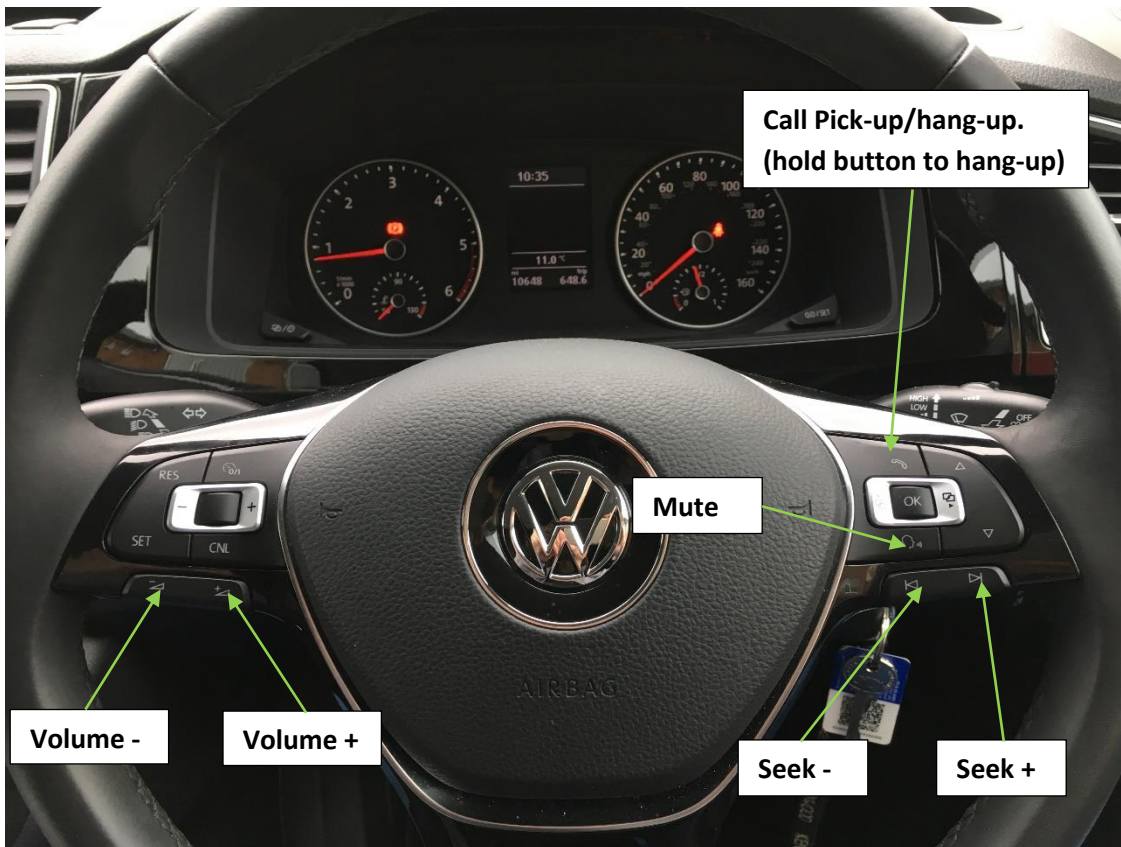
Step 9.

Re-connect battery and refit audio unit back into dash aperture, switch on unit and carry out quick set up as in quick set up guide, test all vehicle functions.

General Notes for Vehicles



- For these features you need to select audio on the display.
- Radio station name will be displayed here, iPod track name etc.
- Please note this is only compatible with cars with white or colour MFD
- This will not work with older-type RED display



For cars fitted with factory fit Bluetooth

This feature will be lost and Bluetooth will now operate through the Kenwood system.
This display will stay



This display will be seen by pressing the phone button on the steering wheel when in audio mode. To remove the display you will need to take out the telephone fuse or Bluetooth module.

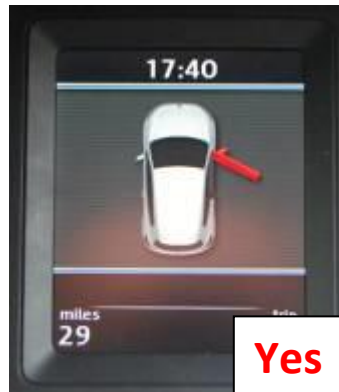


If the car is fitted with Bluetooth button in roof lining, once Kenwood is fitted this does not work



With Standard factory fit iPod/USB and AUX socket will all be redundant once the Kenwood unit is fitted

These following features will only work with cars with white or colour MFD



For cars fitted with factory fitted reversing/front sensors this will now be displayed automatically on the Kenwood Display.



Note: When the display comes up the audio of the radio will mute.

For cars fitted with 2zone electronic climate control this will also be displayed on the Kenwood unit

