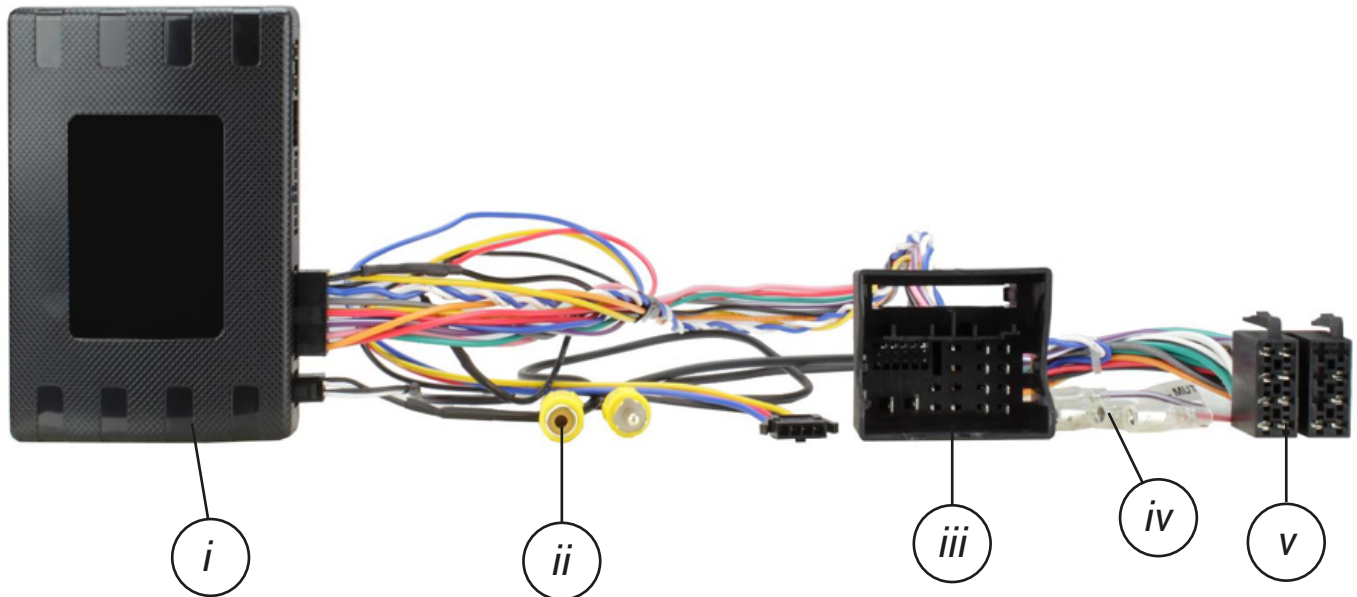


## Infodapter Interface for Volkswagen Vehicles



i. Interface Box  
ii. Video/Camera RCA (Yellow)  
iii. Quadlock Connector

iv. Additional Outputs  
v. ISO Power/Speaker Connector

## APPLICATION

*Note: Application data is subject to change at any time*

Volkswagen Crafter	2017-UP	Volkswagen Golf	2013-UP
Volkswagen Grand California	2016-2019	Volkswagen Polo	2017-UP
Volkswagen Touran (5T)	2016-UP	MAN TGE	2017-UP
Volkswagen Transporter (T6.1)	2019-UP		

*For vehicles with MIB II systems*

## FEATURES

- Retains Steering Wheel Control Functionality
- Retains Phone Button Functionality
- Retains Vehicle Settings and Generates Settings Menus
- Provides Optional Input for Aftermarket Reversing Camera
- Retains Parking Sensor Audio and Generates Parking Sensor Graphics
- Provides Outputs for Park Brake, Reverse Gear, Speed Pulse and Mute
- Software Updatable (*contact supplier for more information*)

### DISCLAIMER

*The information provided in this document is subject to change without notice due to manufacturer changes and/or improvements to the product/s. This instruction manual is based on documented data and research. The manufacturer of this product cannot be held responsible for any changes made to the vehicle by the manufacturer or damages that may occur through the installation of this product in accordance with the steps outlined herein.*

# PRODUCT INFORMATION

## CTUVW04

The Infodapter interface aids the installation of an aftermarket head unit into an OEM dashboard. The **CTUVW04** helps retain steering wheel control presets as well as retaining vital features and functions which include the reverse camera and parking sensors (*if applicable*).

*Note: This product is for vehicles with MIB II systems only. Features related to "Connected Car" - which include E-Call and We Connect - are not actively retained via the Infodapter, they may however have limited functionality within the background.*

! Please be aware that whilst we retain most of the original vehicle feature with our interfaces, some features may be lost. As we continue our research, this product may be updated and improved to support more OEM functionality.

## WIRING KEY

### IN ISO CONNECTOR

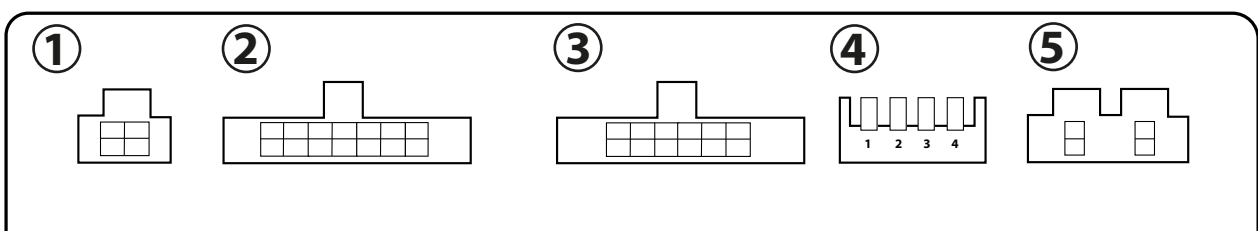
Purple	Right Rear Speaker +	Yellow	Permanent 12V
Purple/Black	Right Rear Speaker -	Black	Ground
Green	Left Rear Speaker +	Red	Ignition 12V
Green/Black	Left Rear Speaker -	Orange	Illumination
Grey	Right Front Speaker +		
Grey/Black	Right Front Speaker -		
White	Left Front Speaker +		
White/Black	Left Front Speaker -		

### ADDITIONAL CONNECTIONS

Pink	Speed Pulse	Yellow RCA (Male)	Infodapter Video
Green	Park Brake	Yellow RCA (Female)	Connect Aftermarket Camera
Purple/White	Reverse Gear		
Grey	Mute		

## INTERFACE CONNECTIONS

- 1 Reverse Camera Extension Harness Input
- 2 Power Harness Input
- 3 Head Unit Connection (Patch) Lead Input
- 4 DIP Switch 1 - 'ON' for Pioneer, 'OFF' for other brand head units  
DIP Switch 2 - 'ON' for PAL reversing camera, 'OFF' for NTSC reversing camera (Default is 'OFF'/NTSC)  
DIP Switch 3 - Change from 'OFF' to 'ON' and back to reset screen settings to factory defaults.  
Note: During this procedure, the screen background will change to red and no settings adjustments can be made.  
DIP Switch 4 - Not Used
- 5 Not used



# PRIOR TO INSTALLATION

---

*Read the manual prior to installation. Technical knowledge is necessary for installation. The place of installation must be free of moisture and away from heat sources. Please ensure that the correct tools are used during the installation to avoid damage to the vehicle or product. InCarTec can not be held responsible for the installation of this product.*

## INSTALLATION GUIDE

---

*See Wiring Diagram on Pg.4 for more information*

*Before installing the interface, the factory stereo must be removed and disconnected. To do this, please consult the vehicle owner's manual/handbook or contact a fitting professional.*

*A stereo connection (patch) lead is also required for the installation of this interface (supplied seperately). Please ensure that you have the correct lead before proceeding. For universal patch leads, prepare the wiring loops in accordance with the instruction manual supplied with the product before installation.*

1. Connect the 12 Pin connector from the stereo connection (patch) lead to the interface box
2. Connect the opposite end of the stereo connection (patch) lead to the steering wheel control input on the back of the aftermarket stereo

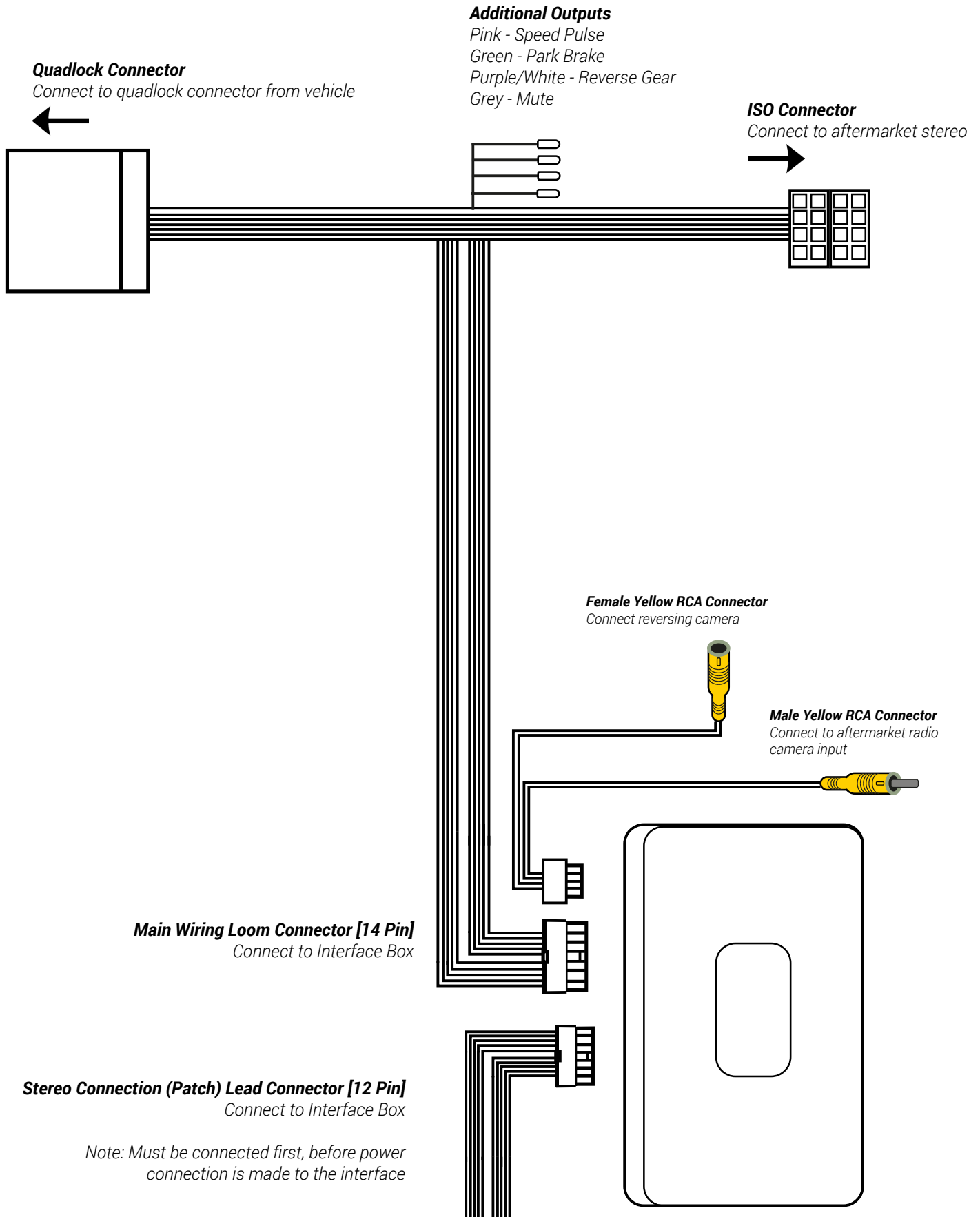
*NOTE: This may be a 3.5mm jack connector or a wired input depending on the brand of aftermarket stereo being fitted. Please consult the aftermarket stereo installation manual for further information on where to make the connection*

**IMPORTANT: THIS STEP MUST BE COMPLETED BEFORE CONNECTING POWER TO THE INTERFACE.**

**FAILURE TO DO SO MAY RESULT IN A LACK OF FUNCTIONALITY AND THE NEED TO REINSTALL THE PRODUCT**

3. Connect the 14 Pin connector from the supplied wiring loom to the interface box
  4. Connect 4 Pin camera extension harness to the interface box
  5. Connect the power/speaker ISO connector to the power/speaker ISO connector at the rear of the aftermarket stereo.
  6. Connect any additional outputs from the main wiring harness to the head unit.  
*See 'Additional Connections' on Page 2 for more information.*
  7. Connect the male yellow RCA to the reverse camera input of the aftermarket head unit
  8. To connect an aftermarket reversing camera, connect the female yellow RCA from the camera extension harness to the male yellow RCA of the camera.
- Note: Ensure that the 'Camera Connected' option in the Preferences menu is set to 'Yes' for the camera to function correctly*
9. Connect the quadlock connector on the supplied harness to the quadlock connector from the vehicle
  10. Test stereo and steering wheel control functionality for correct operation before reassembling the vehicle dashboard. If Infodapter functions are unresponsive, please uninstall the interface and wiring and reinstall carefully in accordance with the above steps.

# WIRING DIAGRAM



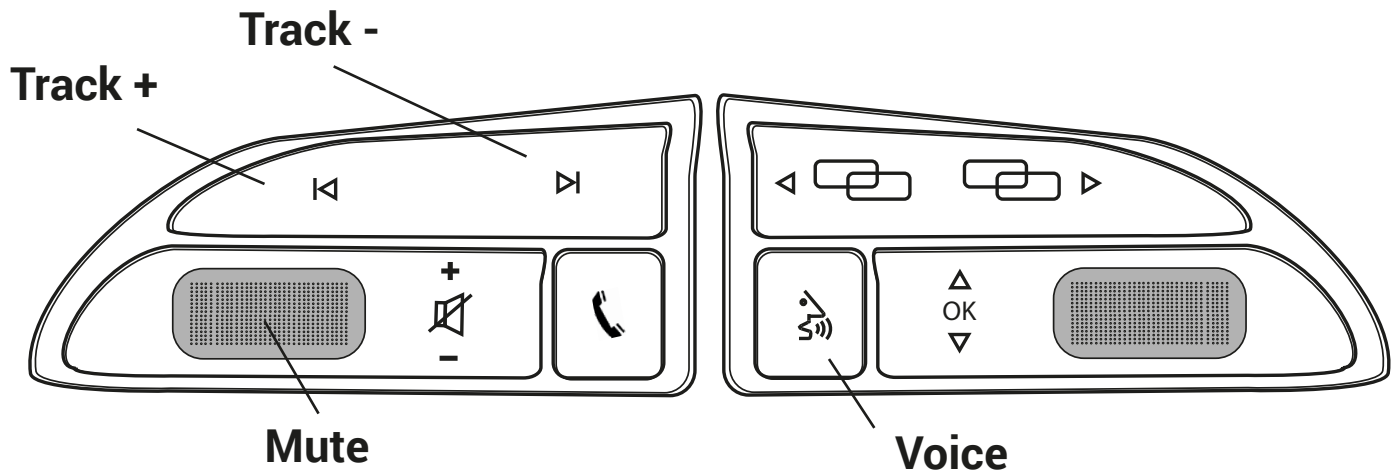
# USER GUIDE

## EXAMPLE STEERING WHEEL CONTROL DIAGRAM

The following diagram, though based on careful research, is an example only. Individual steering wheel control configurations may differ.

The Infodapter will retain several of the vehicle's original steering wheel control functions including moving up and down between tracks, adjusting the volume and picking up or hanging up calls.

In addition to this functionality, the vehicle's steering wheel controls are also used to enter, exit and navigate the Infodapter menus. An example configuration can be seen below:



### Entering the Configuration (Main) Menu

Press and hold the MUTE or VOICE button\*  
**or**  
Double press the MUTE or VOICE button

*\*Note: pressing and holding MUTE or VOICE may activate the voice assistant (e.g. SIRI) in some vehicles. If this occurs, double press the button instead*

### Navigating the Infodapter Menus

Short press MUTE or VOICE to enter a sub-menu or confirm an option within a menu  
Long press MUTE or VOICE to return to the previous menu  
Press TRACK + to scroll up through the menu items, or to increment an option within a menu  
Press TRACK - to scroll down through the menu item, or to decrement an option within a menu

### Exiting the Configuration (Main) Menu

Press and hold the MUTE or VOICE button whilst in the top level Configuration Menu to exit the Infodapter menu system and return to standard stereo operation

#### Driving Mode



The driving mode button can be used as normal. The graphic for the mode will be shown on the head unit display

#### Park Assist

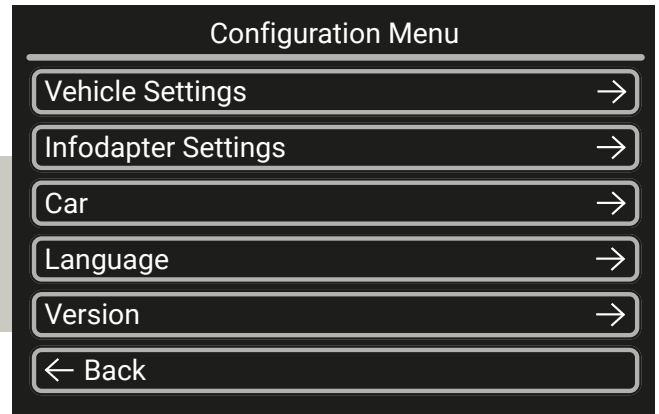
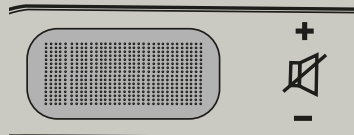


The park assist button can be used as normal to activate or deactivate park assist. The graphic will be shown on the head unit display

# INFODAPTER MENU

Press and hold or double press MUTE or VOICE to enter the Infodapter Configuration menu and navigate through the various options and settings below:

ENTER  
MENU

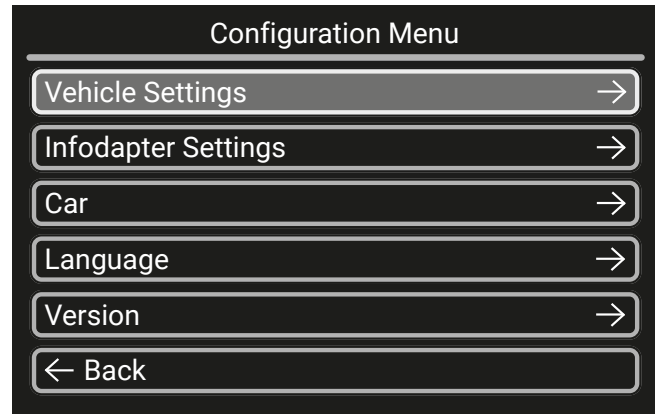


## VEHICLE SETTINGS

The Infodapter interface retains the ability to adjust vehicle settings that were present when the original head unit was installed.

The options available will depend on the individual vehicle and system specification. These might include lights, locks, mirrors, time & date and much more.

*See the vehicle handbook for more information regarding these features and how they operate.*



## INFODAPTER SETTINGS

### Screen Size/Position

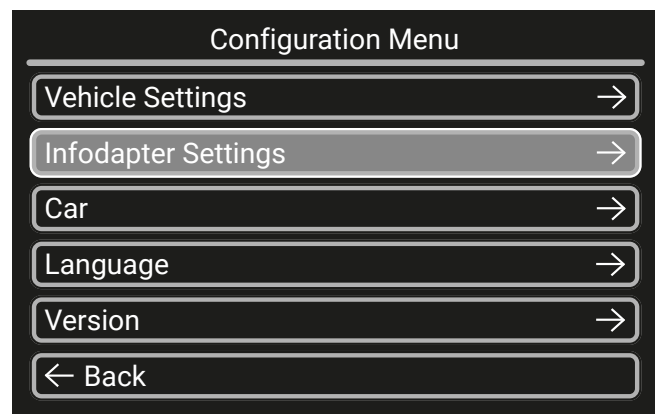
Change horizontal and vertical screen size/position to align the Infodapter with the aftermarket display

### Picture Settings

Adjust the brightness, contrast and colour saturation

### Preferences

Change options based on vehicle functionality and specification (see Page 7)



# INFODAPTER MENU

## PREFERENCES (SUB-MENU)

### Driver Position

Select Left or Right depending upon whether the vehicle is left or right-hand drive.

### Camera Connected

Select Yes if an optional camera is connected

### Reverse Priority

Select whether camera or park assist image is shown by default when reversing.

### Park Brake Source

Set Park Brake output to activate when park brake is on (Park), when speed is less than 3km/h (Speed) or to remain on at all times (Always On)

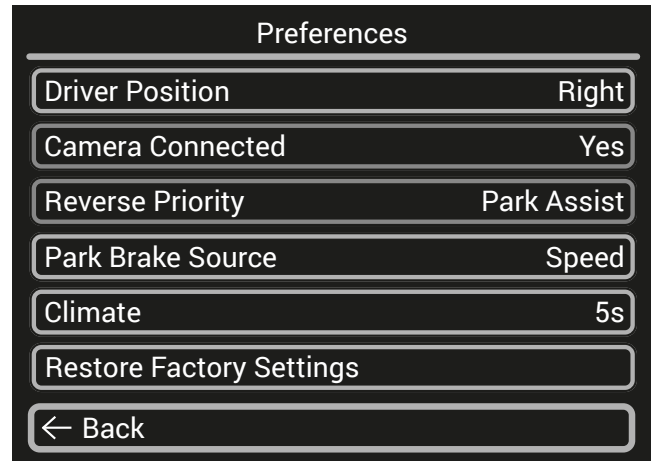
### Climate

Select how long the climate display will be shown on the head unit when adjusted. Selectable range is between 0 (disabled) and 30 seconds

### Restore Factory Settings

Restores all Infodapter settings to factory defaults.

Note: this does not restore vehicle settings to defaults.



## CAR

Access the vehicle's trip computer and view data including distance travelled, fuel consumption etc

## LANGUAGE

Select language (English/French/German/etc)

## VERSION

View software version screen

