

- 1 facia plate
- 2 mounting bracket (right)
- 3 mounting bracket (left)
- 4 bridge
- 5 cylinder head screw M5x12
- 6 flat headed screw

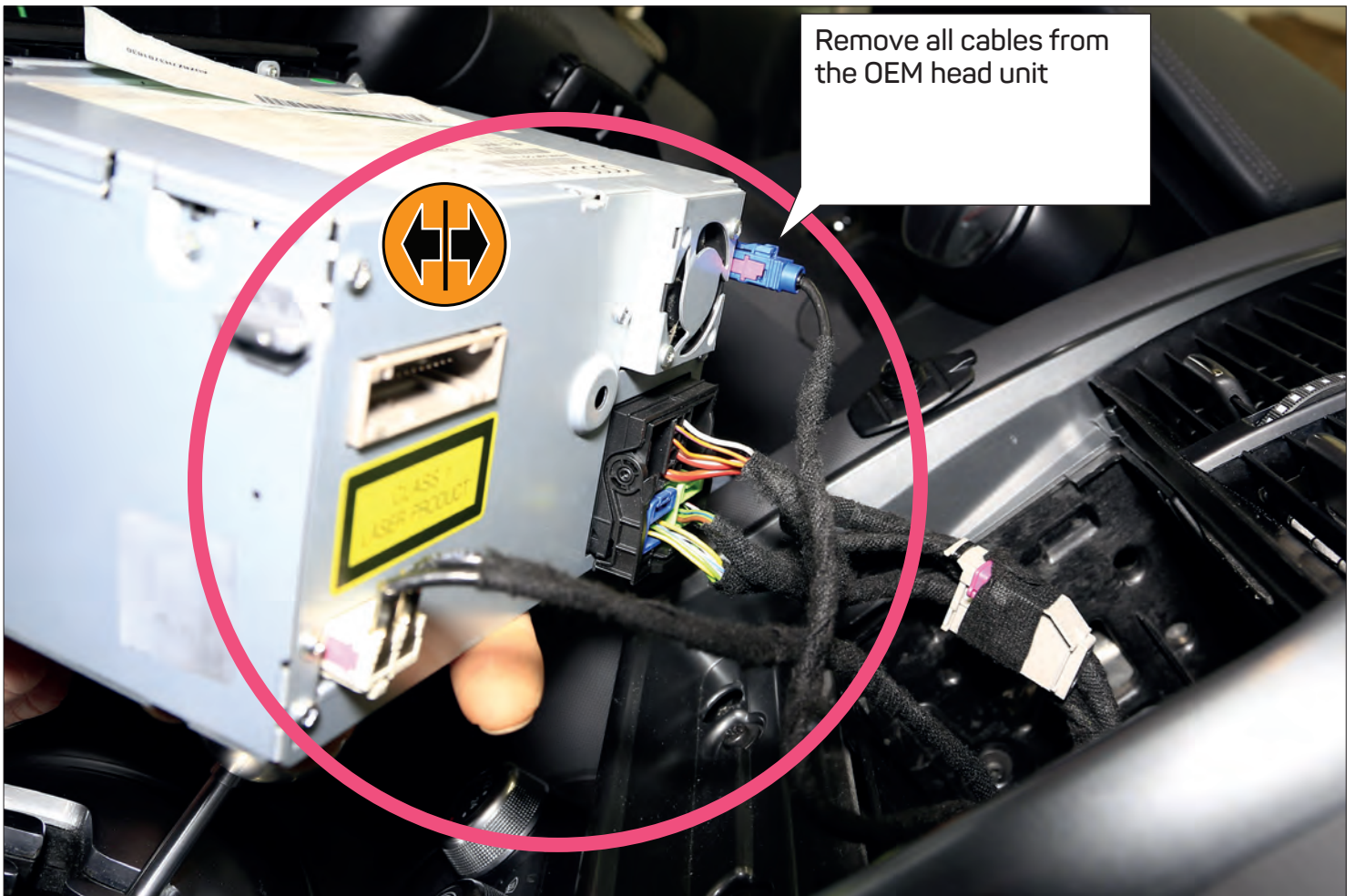
An appropriate installation in observance of these operating instructions is necessary. Please make sure the wiring is arranged so it is not bended or crimped due to the risk of cable break. Make sure that all connections are correct. Route the cable away from moving parts, do not allow the cable to be entangled, pinched or damaged in any way.

We will not be liable for damage due to improper installation or utilization. Use the specified accessory parts to prevent product failure.

Subject to technical modifications; no responsibility is accepted for the accuracy of this information.

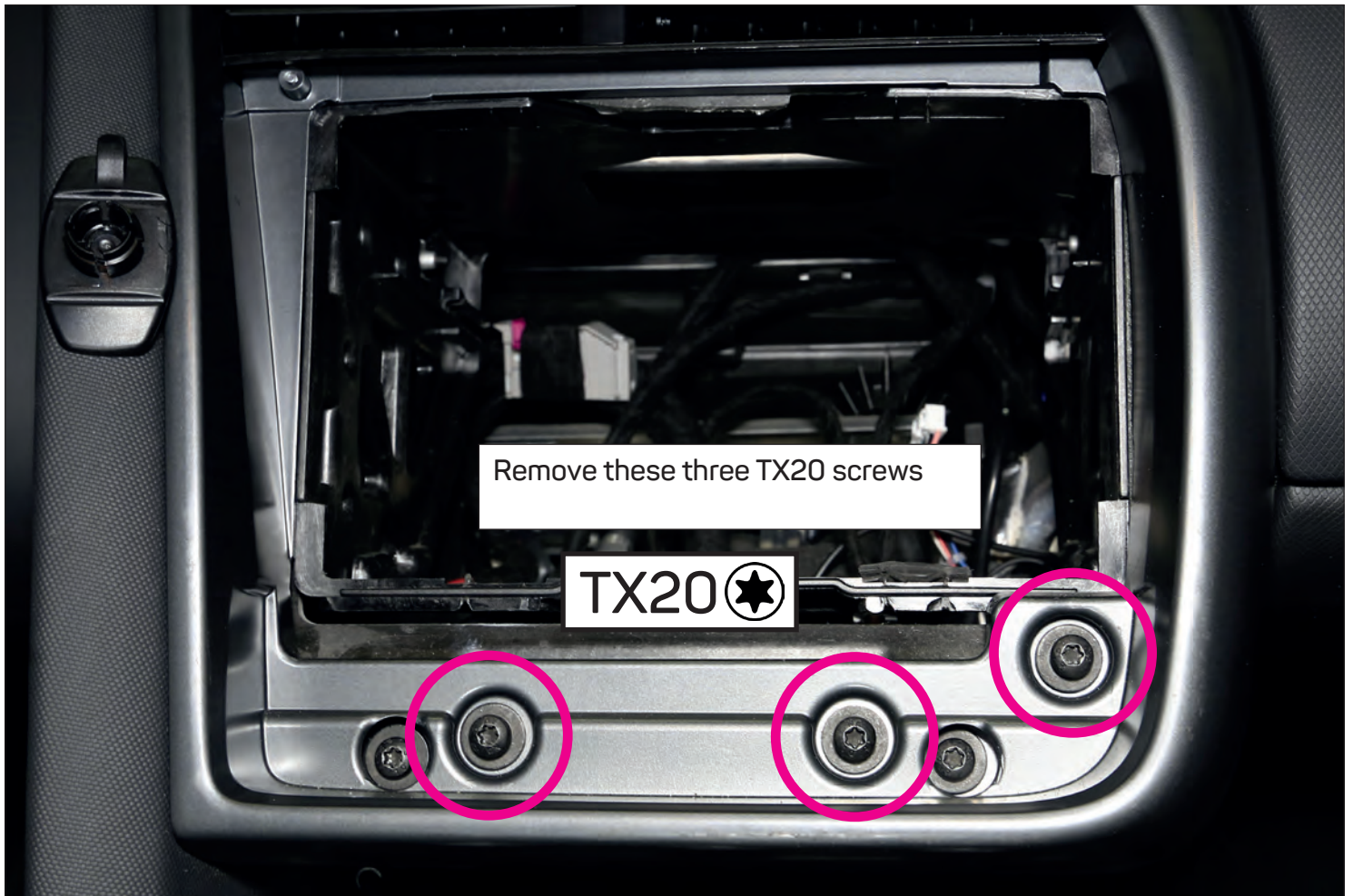




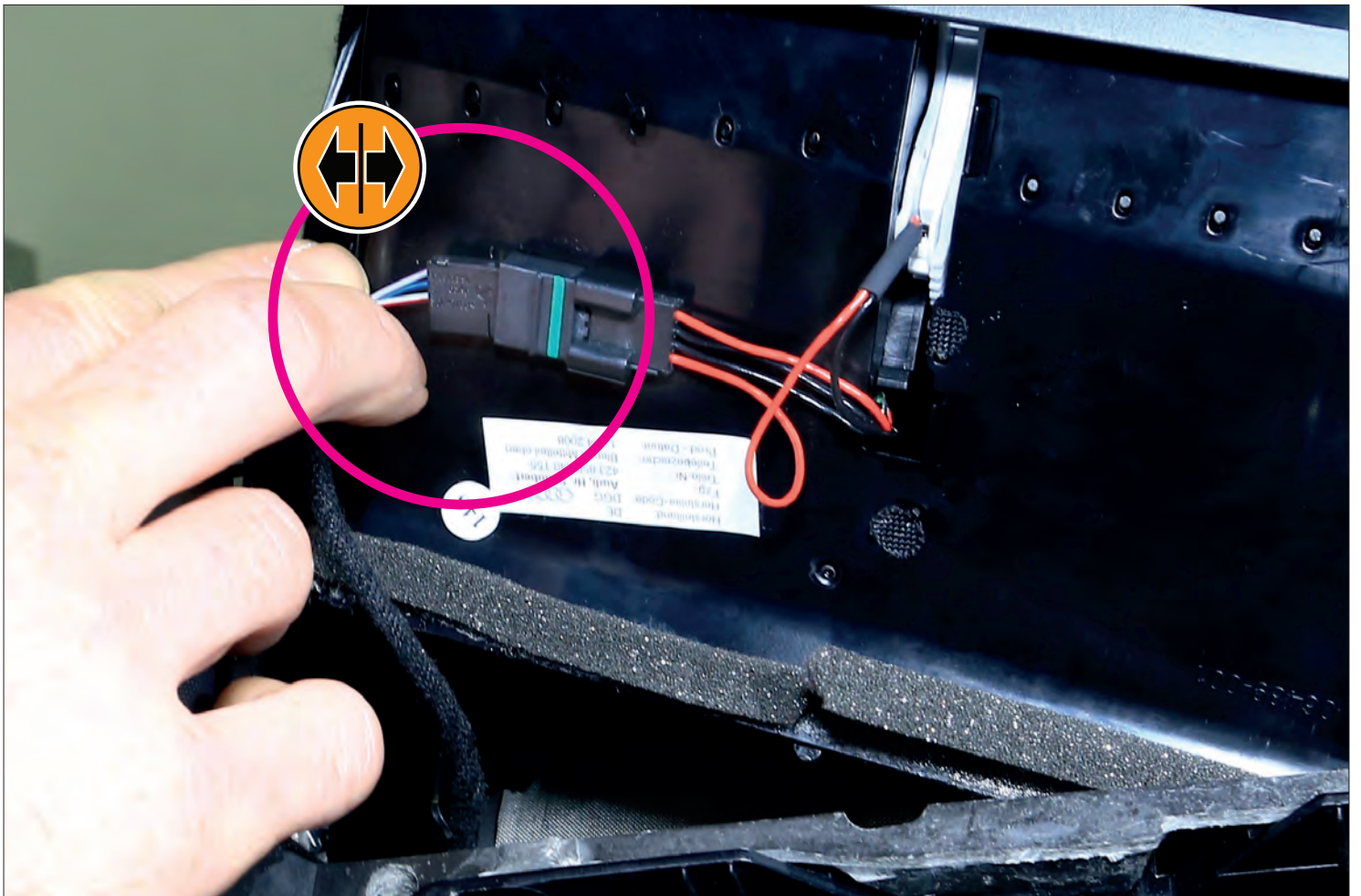
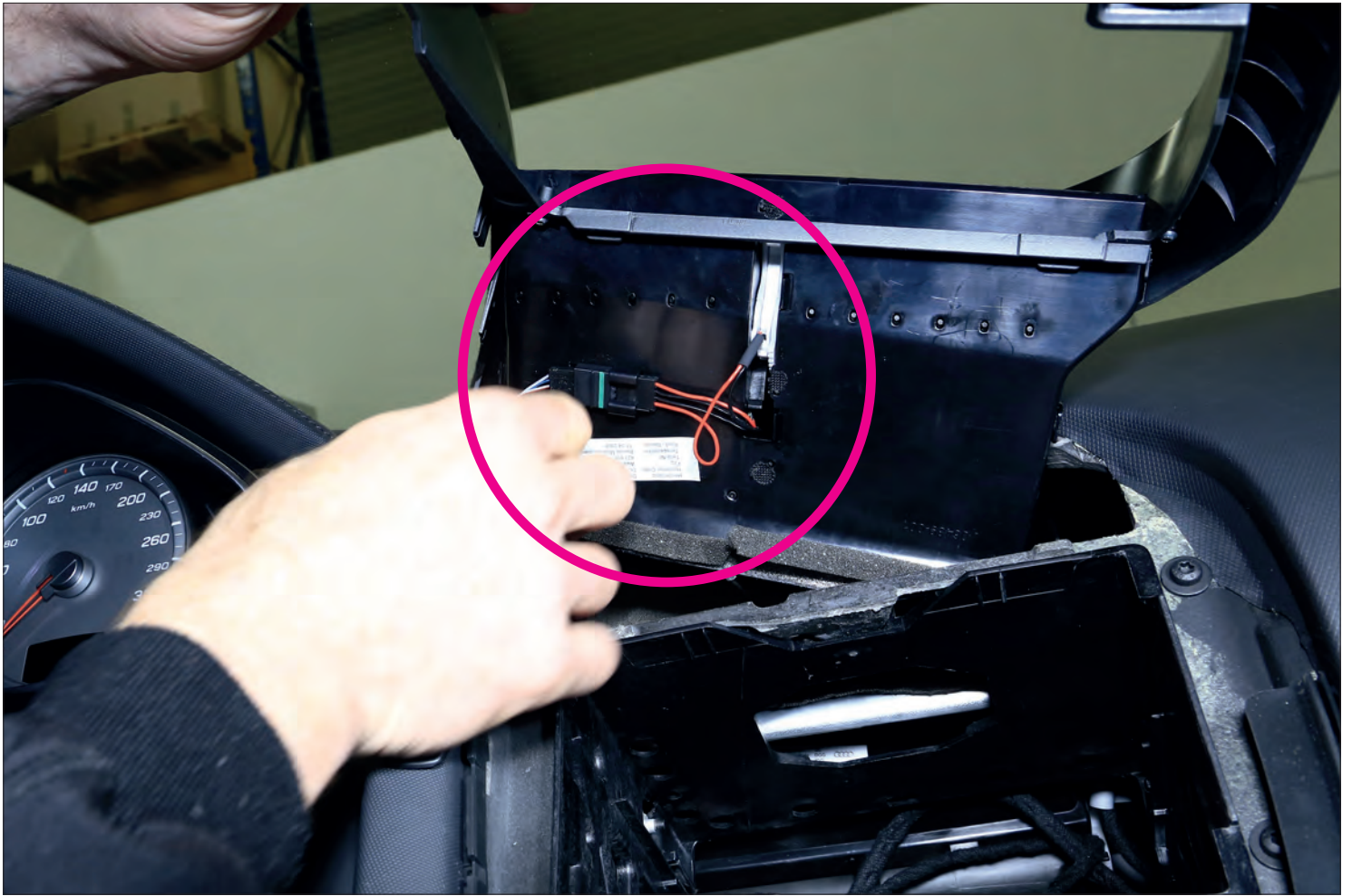


Remove all cables from the OEM head unit

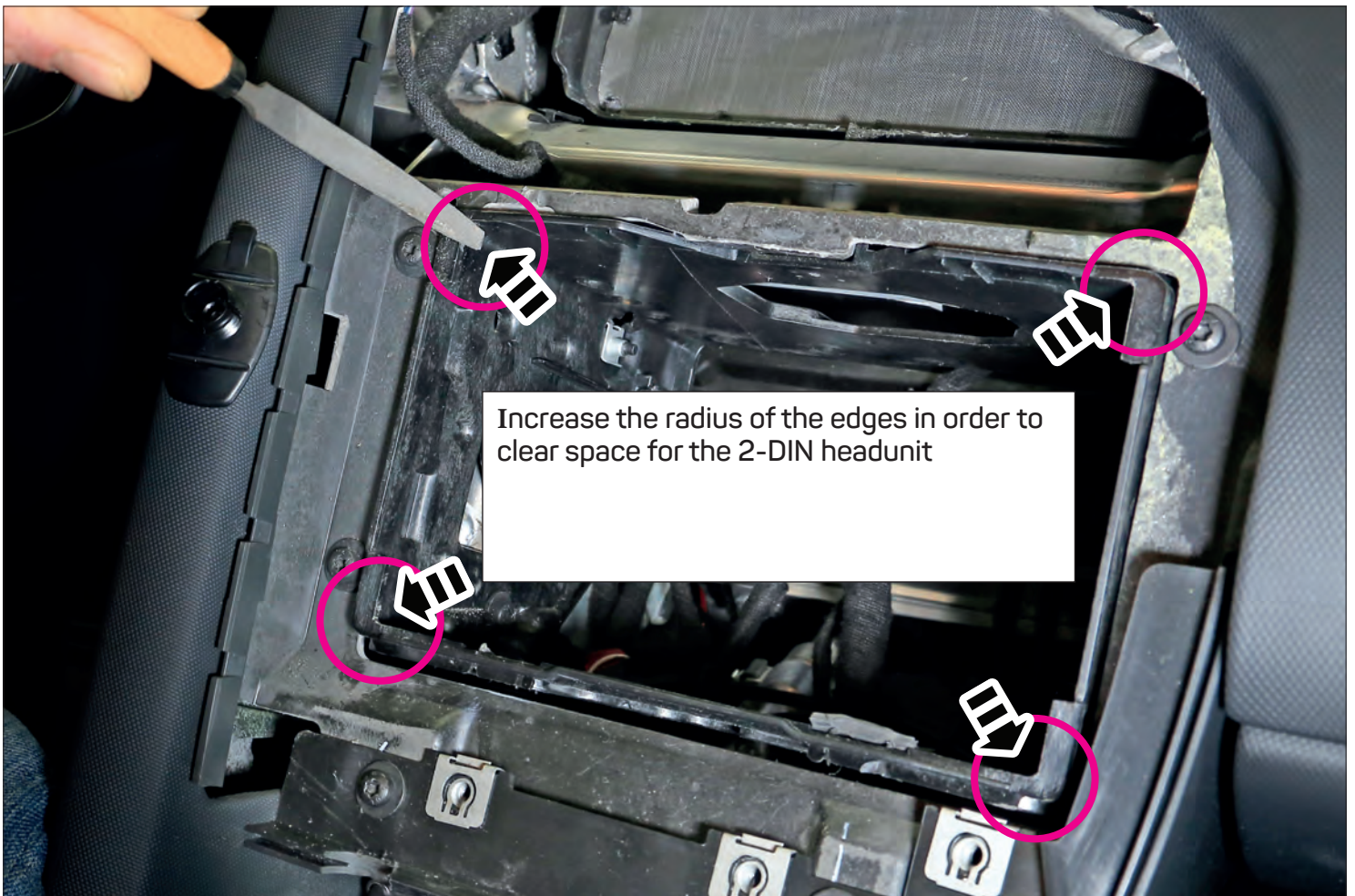




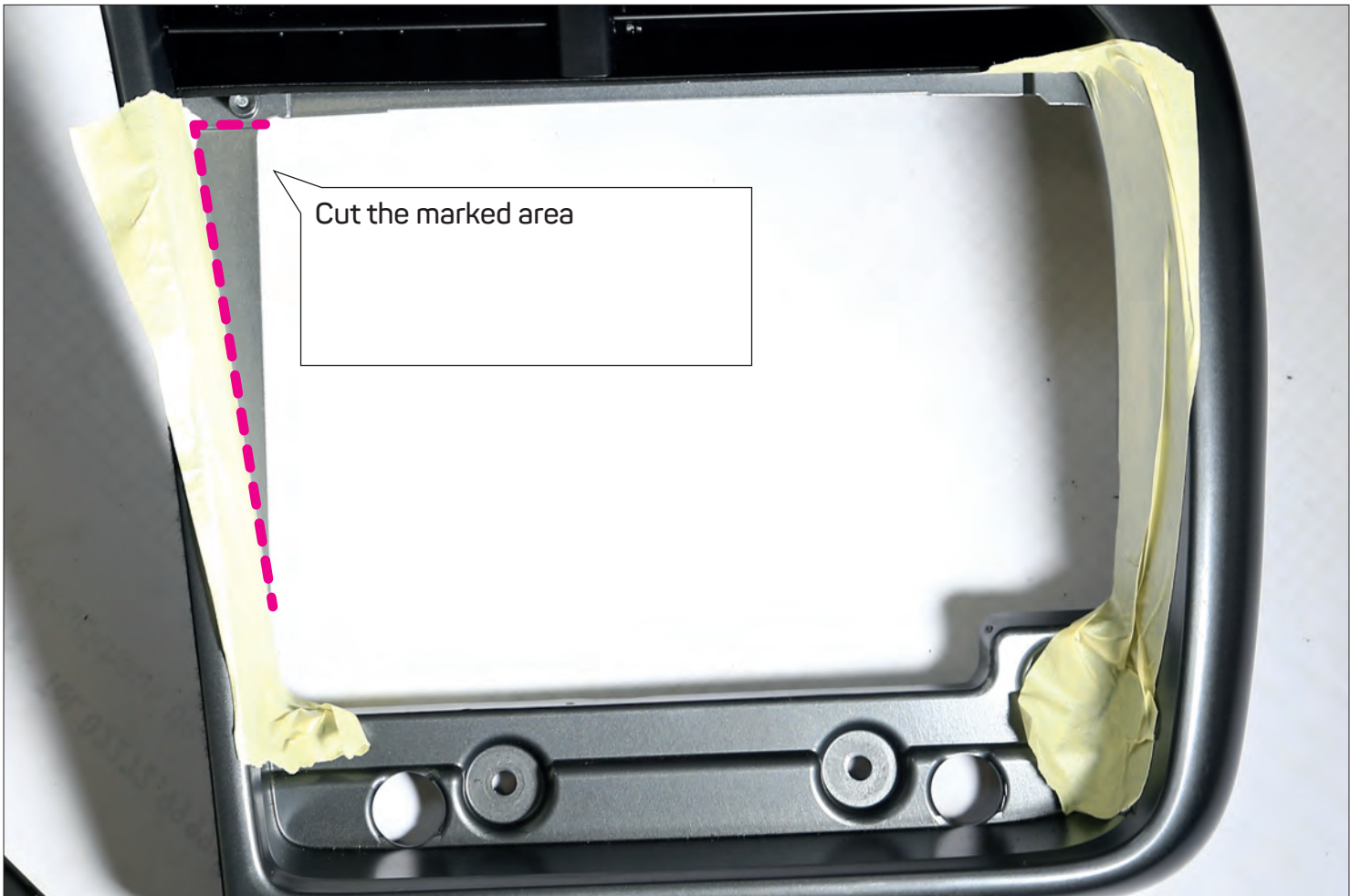
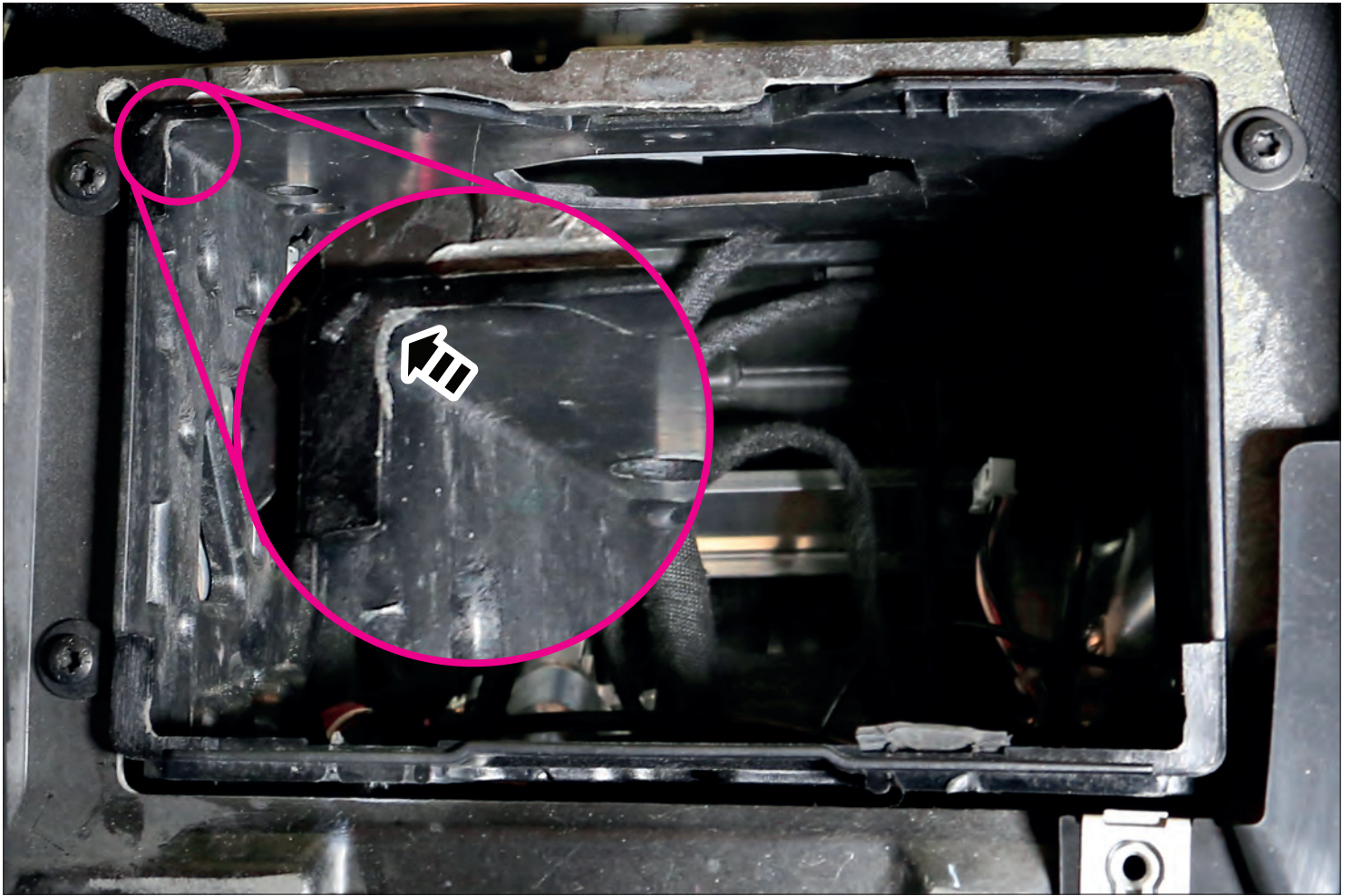














Attach the mounting frames with the included flat headed screws to the 2-DIN headunit. We recommend a distance of app. 16 mm to the front of the head unit

