

Video inserter

27-546 RL2-LR14

Compatible with

Jaguar vehicles

Land Rover vehicles

with Touch-Screen Navigation version 3 infotainment



example

Video-inserter for rear-view camera

Product features

- Video-inserter for factory-infotainment systems
- 1 CVBS Input for rear-view camera
- Automatic switching to rear-view camera input on engagement of the reverse gear
- Activatable parking guide lines for rear-view camera (not available for all vehicles)
- Video-inputs NTSC compatible

Contents

1. Prior to installation

- 1.1. Delivery contents
- 1.2. Checking the compatibility of vehicle and accessories
- 1.3. Boxes and connectors – video interface
- 1.4. Settings - 4 Dip switches

2. Installation

- 2.1. Place of installation
- 2.2. Connection schema
- 2.3. Connection - picture signal cable
- 2.4. Connection – 10pin Power/CAN cable
- 2.5. After-market rear-view camera
 - 2.5.1. Case 1: Interface receives the reverse gear signal
 - 2.5.2. Case 2: Interface does not receive the reverse gear signal
- 2.6. Picture settings and guide lines

3. Specifications

4. Technical support

Legal Information

By law, watching moving pictures while driving is prohibited, the driver must not be distracted. We do not accept any liability for material damage or personal injury resulting, directly or indirectly, from installation or operation of this product. Apart from using this product in an unmoved vehicle, it should only be used to display fixed menus or rear-view-camera video when the vehicle is moving (for example the MP3 menu for DVD upgrades).

Changes/updates of the vehicle's software can cause malfunctions of the interface. Up to one year after purchase we offer free software-updates for our interfaces. To receive a free update, the interface has to be sent in at own cost. Wages for de-and reinstallation and other expenditures involved with the software-updates will not be refunded.

1. Prior to installation

Read the manual prior to installation. Technical knowledge is necessary for installation. The video interface's place of installation must be free of moisture and away from heat sources.

Before the final installation in the vehicle of the video sources, we recommend a test-run to ensure the compatibility of vehicle and interface. Due to changes in the production of the vehicle manufacturer there's always a possibility of incompatibility.

1.1. Delivery contents



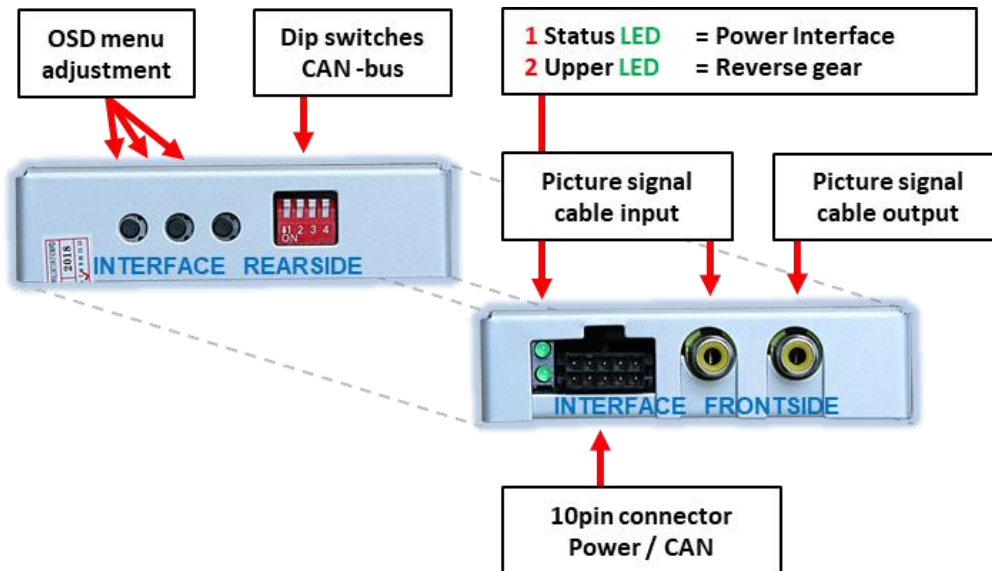
Take down the serial number of the interface and store this manual for support purposes: _____

1.2. Checking the compatibility of vehicle and accessories

Requirements		
Brand	Compatible vehicles	Compatible systems
Jaguar	F-Type model years 2013-2015 XF X250 model years 2012-2015 XJ X351 model years 2010-2015	Touch-screen navigation Version 3 (resistive) and 3.1 (capacitive)
Land Rover	Range Rover Evoque L538, Range Rover Sport L320, Discovery4 L319 model years 2012-2014, Range Rover (Vogue) L322, Freelander2 L359 model years 2013- <i>Only for vehicles with automatic gear shift</i>	
	vehicles model years 2015-2016 (not 2017) with Meridian-Sound-System <i>Only for vehicles with automatic gear shift</i>	
Limitations		
Guidelines	Displayed guidelines are not available in all vehicles.	
Video input signal	Only NTSC video sources compatible.	

1.3. Boxes and connectors – video interface

The video-interface converts the video signals of connected after-market sources in a factory monitor compatible picture signal which is inserted in the factory monitor, by using separate trigger options. Further it reads the vehicle's digital signals out of the vehicle's CAN-bus and converts them for the video interface.



1.4. Settings of the 4 Dip switches

The 4 dip-switches of the video are used to select the kind and choice of the factory head-unit.

Dip position down is ON and position up is OFF.



Dip	Funktion	ON (unten)	OFF (oben)
1	No function		Set to OFF
2	Vehicle selection	Set to ON	
3	No function		Set to OFF
4	No function		Set to OFF

After each Dip-switch-change a power-reset of the video interface has to be performed!

2. Installation

To install the interface, first switch off the ignition and disconnect the vehicle's battery. Please read the owner's manual of the car, regarding the battery's disconnection! If required, enable the car's Sleep-mode (hibernation mode)

In case the sleep-mode does not succeed, the disconnection of the battery can be done with a resistor lead.

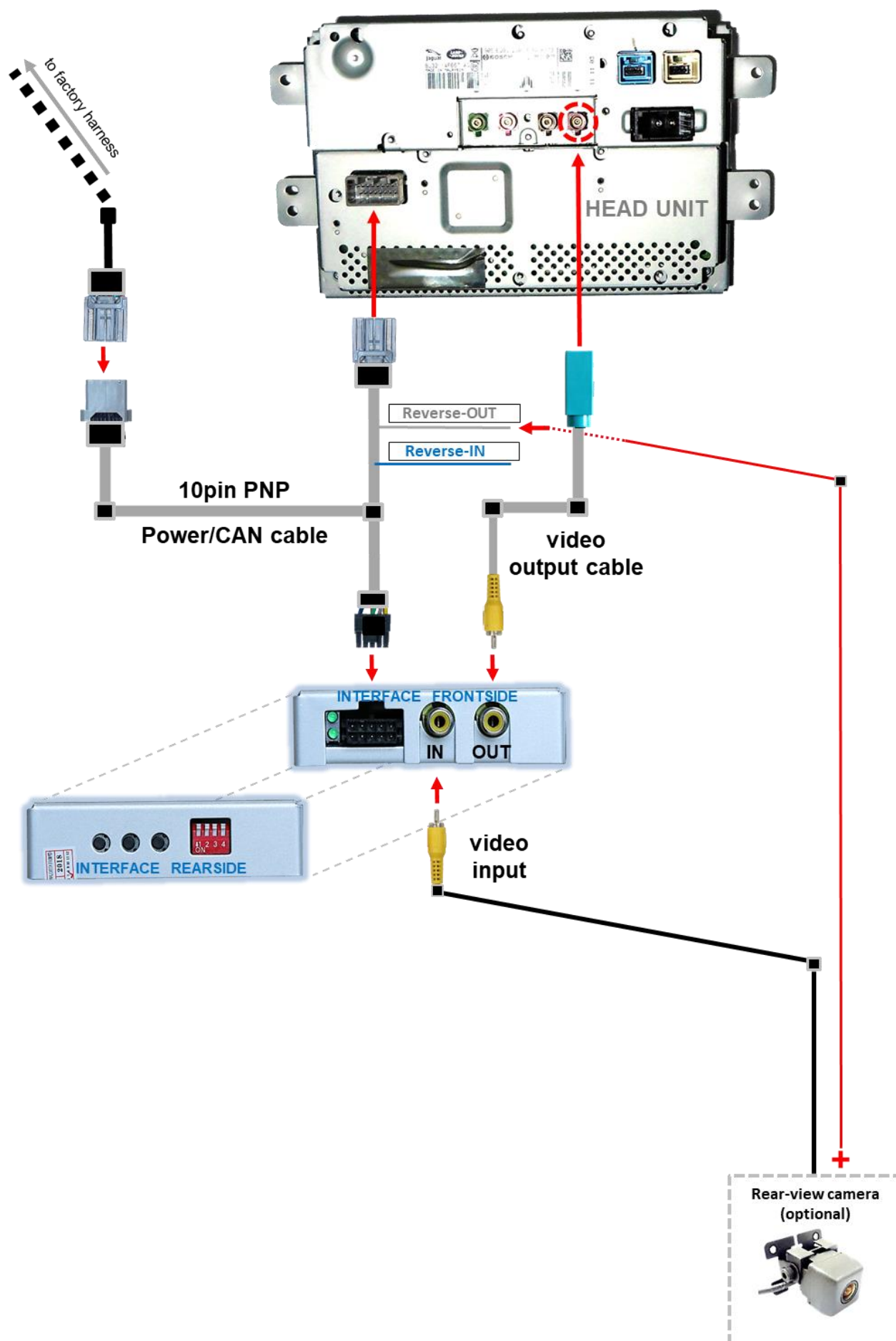
If the necessary stabilized power supply for the interface is not taken directly from the battery, the chosen connection has to be checked for being constantly stabile.

The interface needs a permanent 12V source!

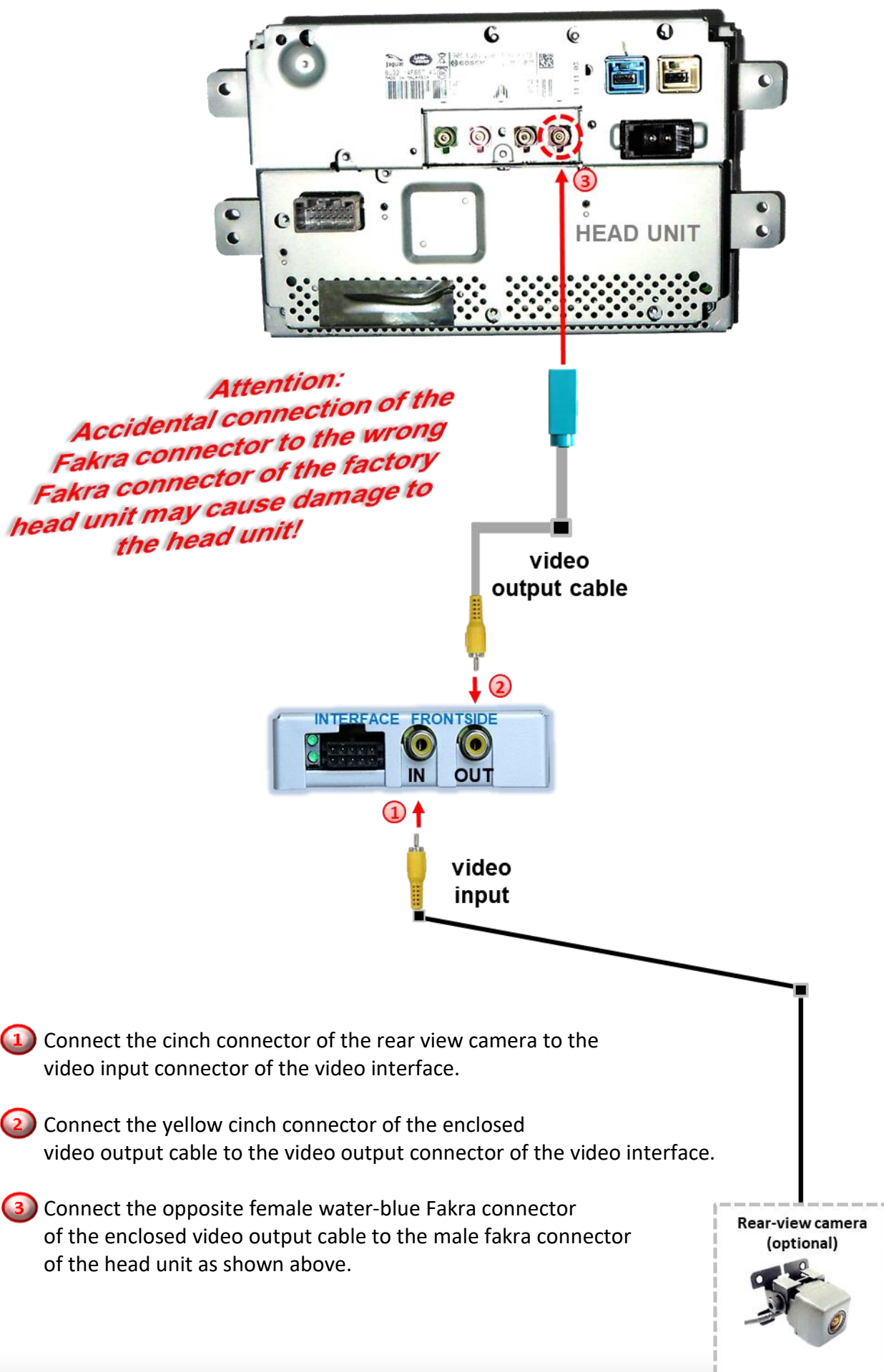
2.1. Place of installation

The interface is supposed to be installed at a suitable location behind the vehicle's head-unit.

2.2. Connection schema

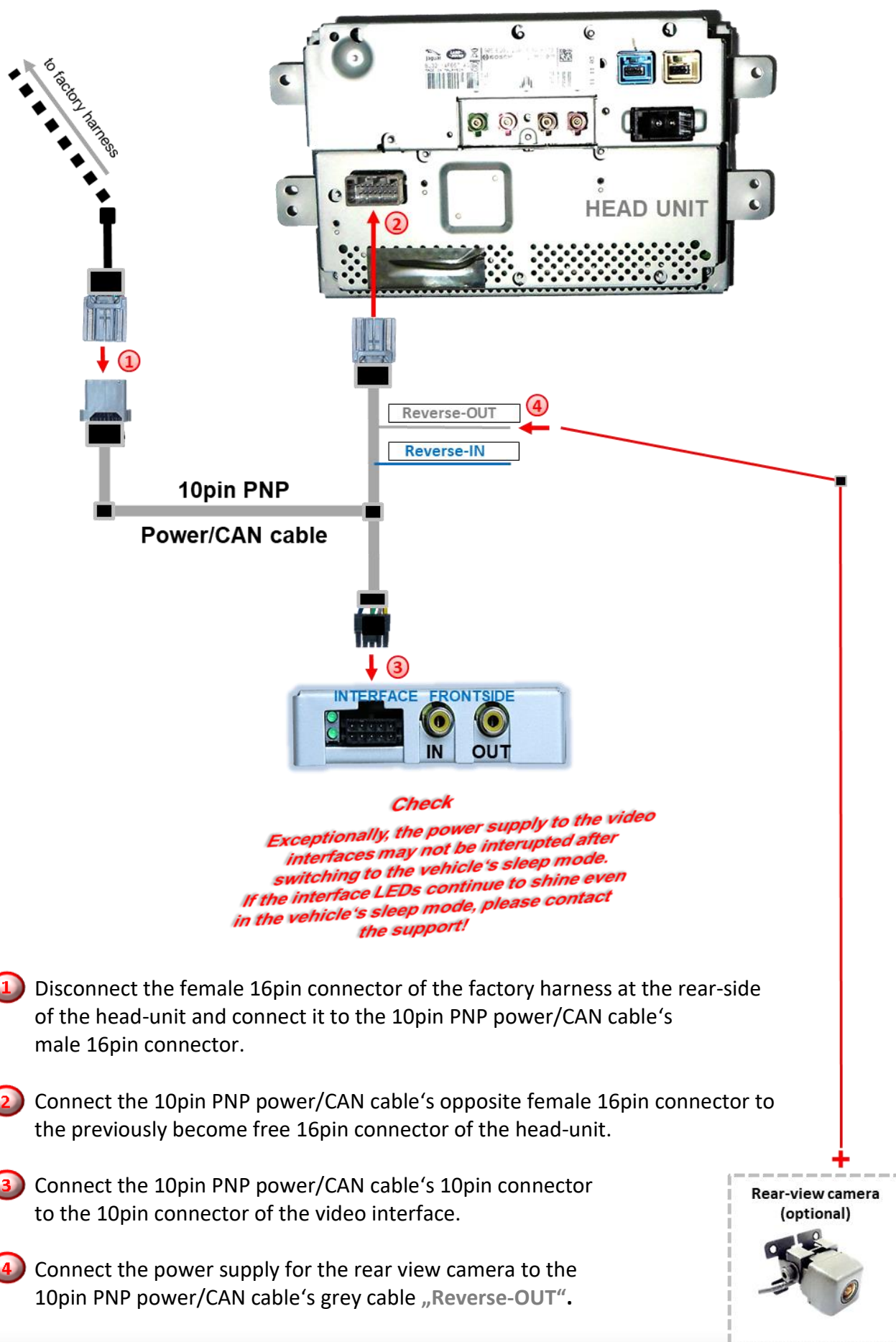


2.3. Connection – picture signal cable



- ① Connect the cinch connector of the rear view camera to the video input connector of the video interface.
- ② Connect the yellow cinch connector of the enclosed video output cable to the video output connector of the video interface.
- ③ Connect the opposite female water-blue Fakra connector of the enclosed video output cable to the male fakra connector of the head unit as shown above.

2.4. Connection – 10pin Power/CAN cable



2.5. After-market rear-view camera

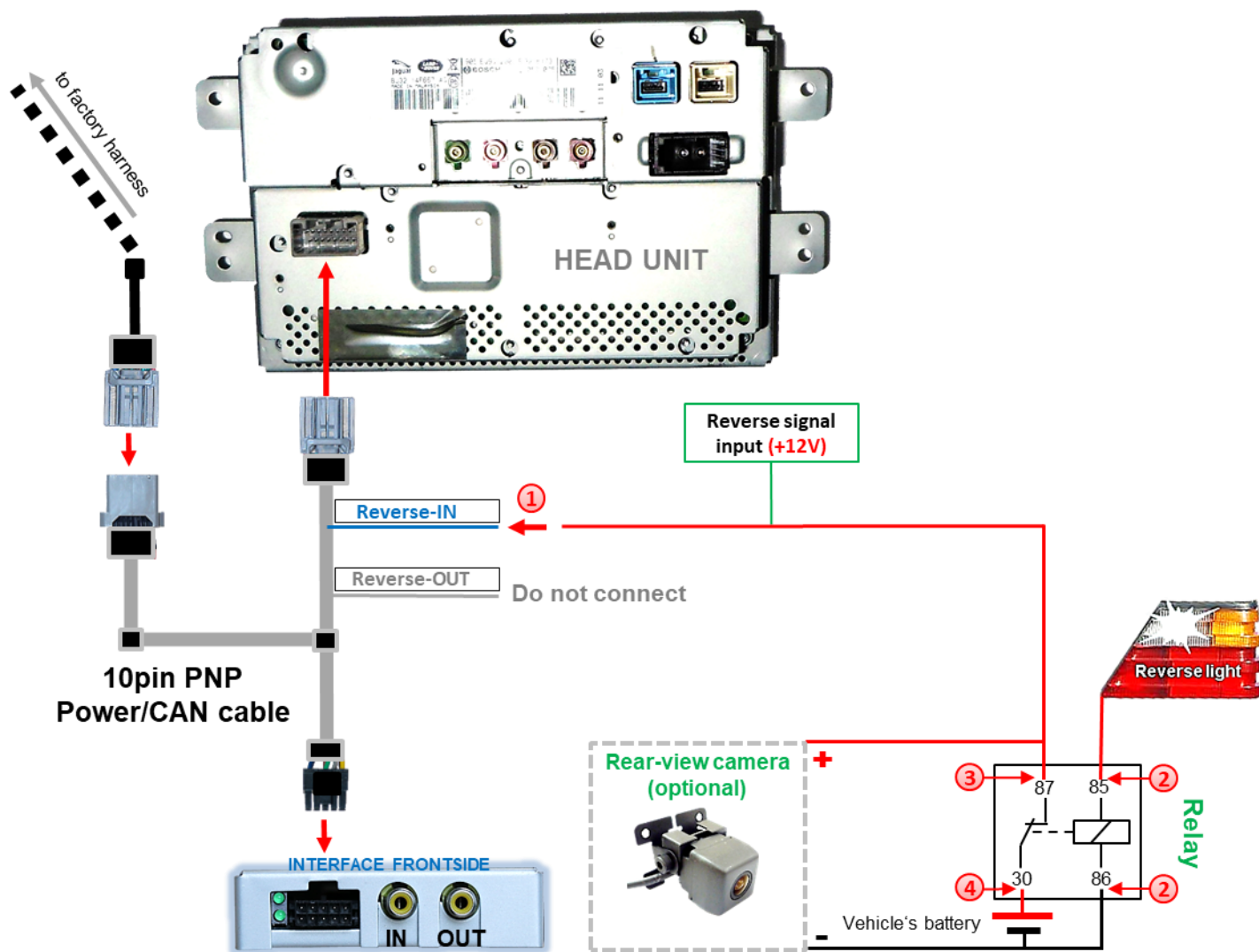
Some vehicles have a different reverse gear code on the CAN-bus which the video-interface is not compatible with. Therefore, there are two different ways of installation. If the video interface receives a signal of the reverse gear, the grey coloured wire **“Reverse-OUT”** should carry +12V while the reverse gear is engaged.

2.5.1. Case 1: Interface receives the reverse gear signal

If the interface delivers +12V on the grey coloured output wire **“Reverse-OUT”** of the 10pin PNP Power/CAN cable while reverse gear is engaged, the video interface will automatically switch to the rear-view camera input **“IN”** while the reverse gear is engaged.

If the video interface does not deliver +12V on the grey coloured wire **“Reverse-OUT”** of the 10pin PNP Power/CAN cable when reverse gear is engaged (not all vehicles are compatible), an external switching signal from the reverse gear light is required. As the reverse gear light's power supply isn't voltage-stable all the time, an ordinary open relay (e.g. AC-RW-1230 with wiring AC-RS5) or filter (e.g. AC-PNF-RVC) is required. The following diagram **“Case 2: Interface does not receive the reverse gear signal”** shows the connection type of the relay.

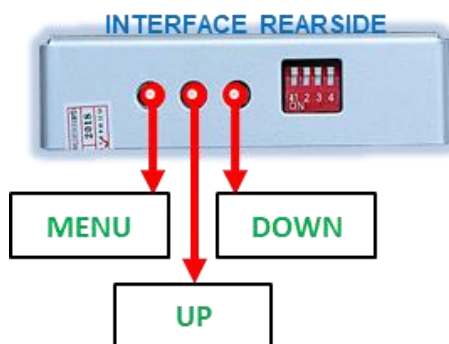
2.5.2. Case 2: Interface does not receive the reverse gear signal



- ① Connect the blue coloured input cable **"Reverse-IN"** to the output connector (87) of the relay.
- Note:** The grey coloured output-cable **"Reverse-OUT"** remains disconnected as it's out of function.
- ② Connect the Reverse light's power-cable to coil (85) and the vehicle's ground to coil (86) of the relay.
- ③ Connect the output connector (87) of the relay to the rear-view camera's power-cable, like you did it to the blue coloured **"Reverse-IN"** cable before.
- ④ Connect stabile and permanent +12V to the relay's input connector (30).

Note: BEFORE completing the installation, check that the switchover to the rear-view camera takes place by applying +12V current to the blue coloured **"Reverse-IN"** wire.

2.6. Picture settings and guide lines



The picture settings are adjustable by the 3 push-buttons at the rear-side of the video-interface. Press the MENU button to open the OSD settings menu or to switch to the next menu item. Press UP and DOWN to change the selected value. The buttons are placed inside the housing to avoid accidental changes during or after the installation. Picture settings must be done separately for all video inputs while the corresponding input is selected and visible on the monitor.

Note: The OSD menu is only shown when a working video source is connected to the rear-view camera input of the interface.

The following settings are available:

Brightness	
Saturation	
Position H (horizontal)	= horizontal picture position
Position V (vertical)	= vertical picture position
IR-AV1	= no function
IR-AV2	= no function
Guide L	= distance-left guide-line
Guide R	= guide-lines position
Guide-CNTRL	= guide-lines/PDC On/Off
H-SIZE	= horizontal picture size RVC
V-SIZE	= vertical picture size RVC



Note: If there is no communication between interface and the vehicle's CAN-bus (several vehicles aren't compatible), the reverse gear guide-lines can't be shown during the vehicle's operation, even if they once appear after having switched the system to powerless!

3. Specifications

BATT/ACC range	7V - 25V
Stand-by power drain	40mA
Power	190mA @12V
Video input	0.7V - 1V
Video input formats	NTSC
Temperature range	-40°C to +85°C
Dimensions video-box	80 x 22 x 110 mm (W x H x D)



10R-03 5384

Made in China

