



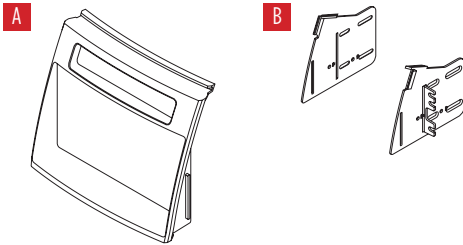
## Kia Soul 2012-2013

### KIT FEATURES

- ISO DDIN radio provision
- Painted matte black

### KIT COMPONENTS

- A) Radio trim panel • B) Radio brackets



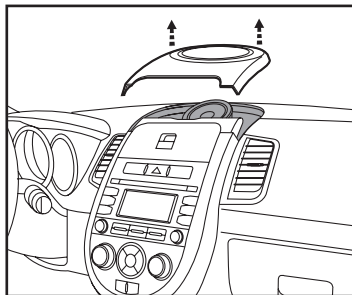
### TABLE OF CONTENTS

Dash Disassembly .....	2
Kit Assembly .....	3

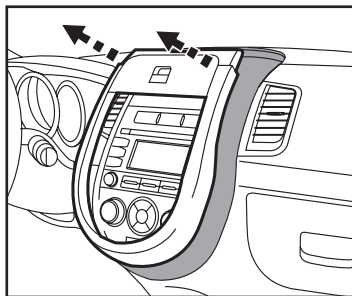
- Panel removal tool • Phillips screwdriver

## DASH DISASSEMBLY

1. Unclip and remove the panel (and speaker if equipped) from above the radio panel. (Figure A)
2. Unclip and remove the radio/climate control trim panel. (Figure B)



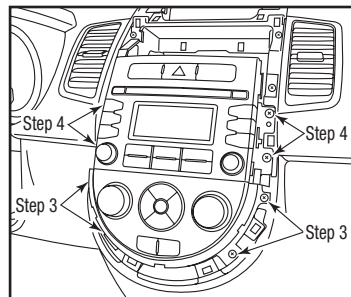
(Figure A)



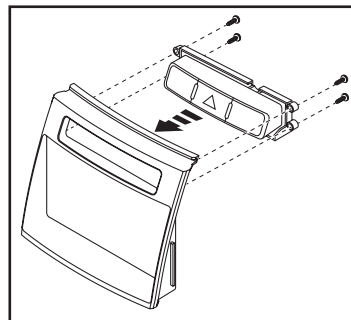
(Figure B)

3. Remove (4) Phillips screws securing the climate control panel. Slide the panel out and set to the side. (Figure C)
4. Remove (4) Phillips screws securing the radio. Slide the radio out, then unplug and remove the radio. (Figure C)
5. Remove (4) screws securing the hazard switch assembly from the radio, then secure the assembly to the radio trim panel using the same factory screws. (Figure D)

*Continue to Kit Assembly*



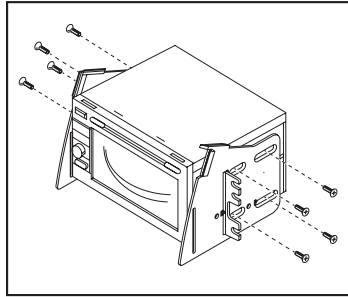
(Figure C)



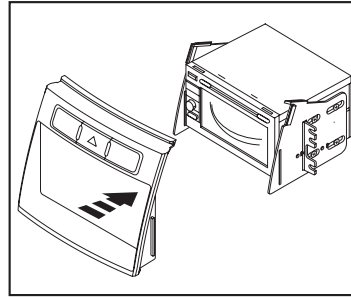
(Figure D)

## KIT ASSEMBLY

1. Secure the *radio brackets* to the radio using the screws supplied with the radio. (Figure A)
2. Clip the *radio trim panel* over the radio/bracket assembly. (Figure B)
3. Locate the factory wiring harness and antenna connector in the dash. Test the radio for proper operation.
4. Secure the radio assembly to the dash using the factory screws.
5. Reassemble the dash in reverse order of disassembly.



(Figure A)



(Figure B)