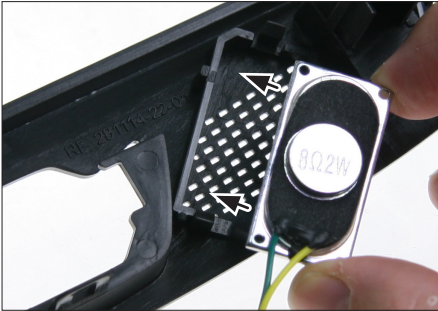


Installation Manual Double DIN Kit



20. as needed fix speaker with cyanoacrylate adhesive

Spare OEM hazard light switch by Ford required. Ford Part-No.: 1519127



21. Mount
- air vents
- hazard light switch
to facia plate

Push facia plate on dash board until it snaps in



22. Fix facia plate with 2 OEM screws (see arrows)



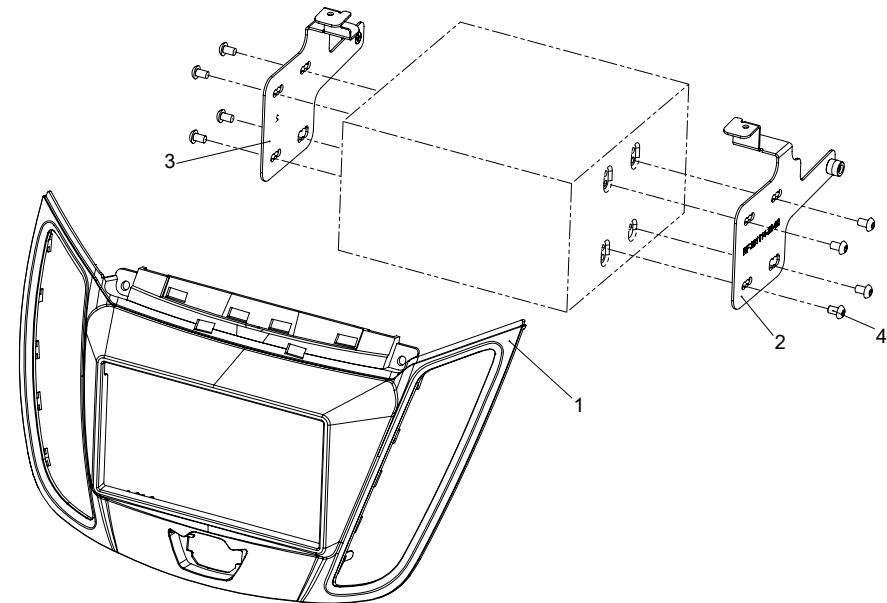
23. Re-install everything in reverse order to finish installation

50-892

- Ford Ford C-MAX (DXA) 12/2010->
- Ford Kuga (DM2) 03/2013->

Compatible with these double DIN devices

Double-DIN Navigation



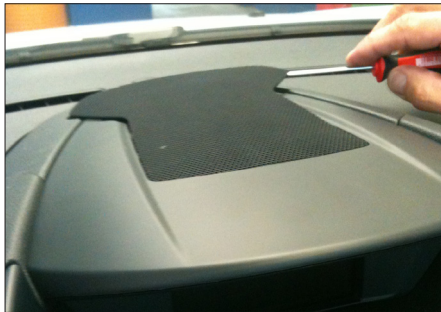
Spare OEM hazard light switch
by Ford required
Ford Part-No.: 1519127

- Double DIN Kit contents
- (1) Facia Plate
 - (2) Mounting Bracket right
 - (3) Mounting Bracket left
 - (4) flat headed screws

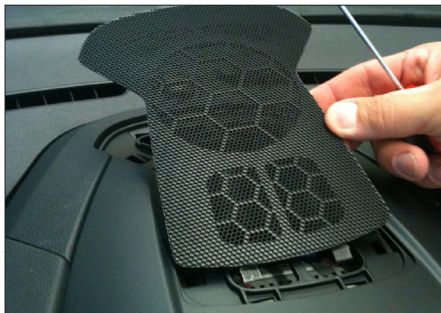
Installation Manual Double DIN Kit



1. Ford C-MAX with OEM radio



2. Unclip speaker grill at top of dash board carefully



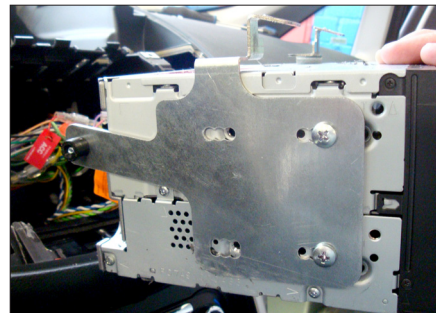
3. Remove speaker grill



4. Unclip cover of center console



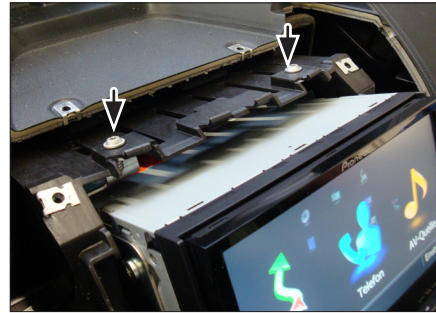
17. Dashboard after plastic cut out



18. Fix mounting brackets to Double DIN head unit

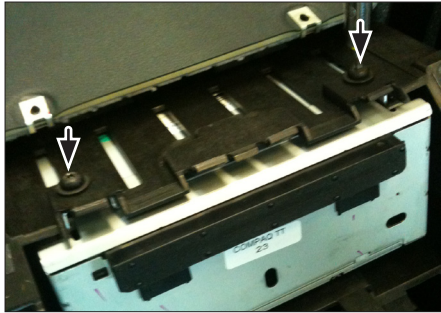
Connect all required circuit points

Push Double DIN head unit into dash board



19. Fix Double DIN head unit

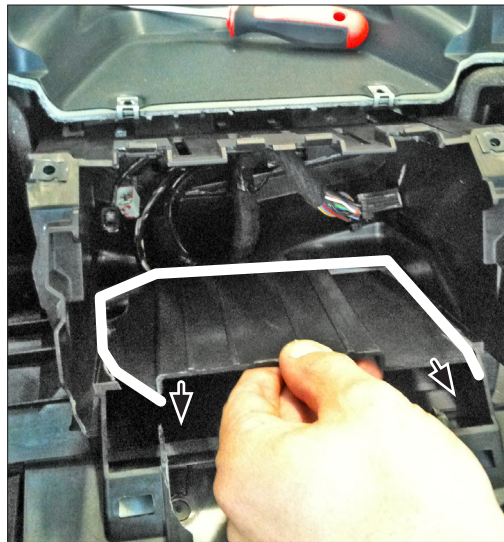
Installation Manual Double DIN Kit



14. Remove screws of OEM Radio/CD unit
Remove OEM Radio/CD unit



15. Cut away plastic to clear space for Double DIN head unit



16. Remove plastic



5. Remove screws of center console



6. Unclip cover center console



7. Remove top panel cover

Installation Manual Double DIN Kit



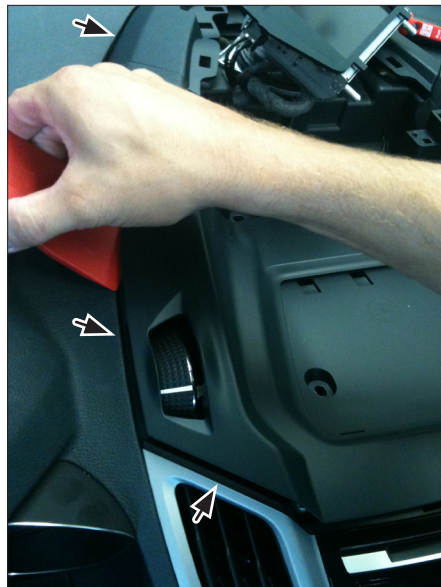
8. Unclip display



9. Remove display



10. Unclip center panel



11. Remove screw (see arrow)



12. Remove screws on top of OEM head unit (left and right)



13. Unclip air vents
Remove air vents