

Installation Manual Double DIN Kit

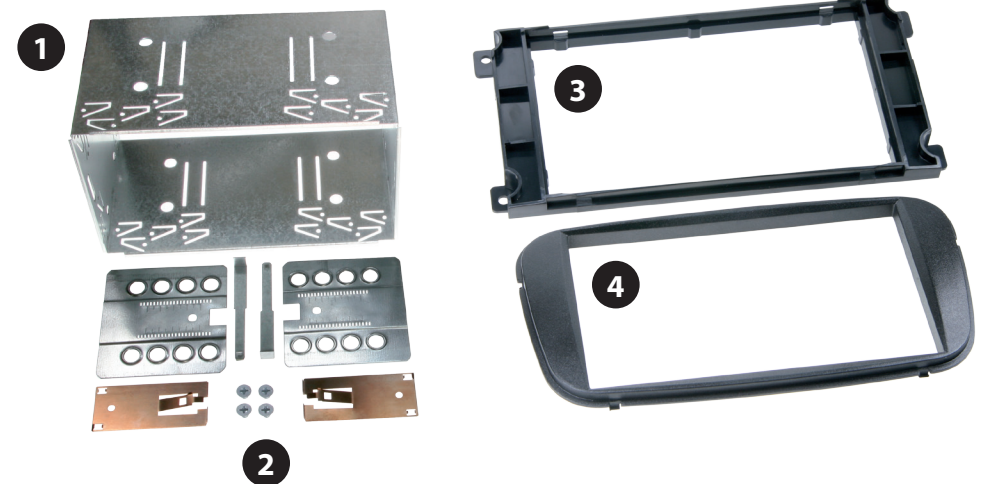
Ford C-MAX 2007->
Ford Focus 2007->

Ford Galaxy 2007->
Ford Mondeo 2007->
Ford S-MAX 2007->

with Ford OEM-Radio:
6000 CD / Audio SONY 6CD / Travel Pilot X

| | |
|--------|----------|
| Colour | |
| Black | 50-876 |
| Silver | 50-876/1 |

Compatible with double DIN devices



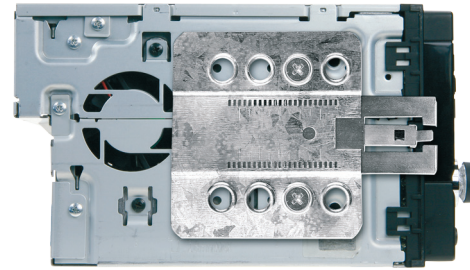
Double DIN Set contents

- (1) Metal Frame
- (2) Installation Kit

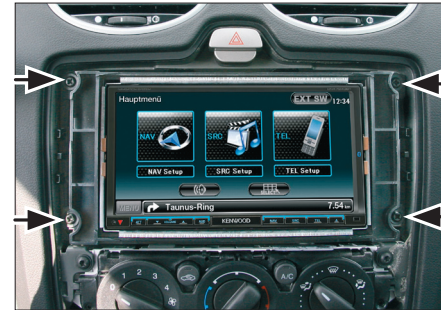
- (3) Mounting Frame
- (4) Facia Plate



1. Unclip the frame surrounding the OEM-Radio and remove it

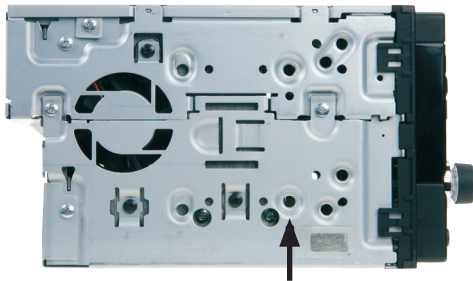


2. Remove the four screws
Remove the OEM-Radio

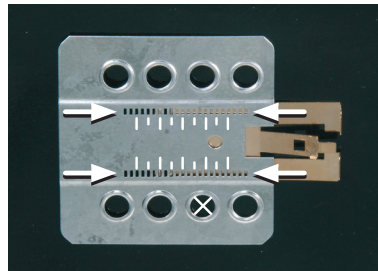


3. Push the head unit with the mounted metal brackets into the metal frame, until it snaps in

Place the mounting frame on the dashboard and fix it with the 4 original screws



Mount the metal brackets with the double DIN head unit



The position of the copper coloured holder can be adjusted to your needs for perfect fit. (see sample)



Connect all required circuit points and push the double DIN head unit into the mounting frame until it snaps in

Place the facia plate

Place the frame surrounding the radio to finish installation

All installation work must be performed by a qualified professional installer only.
The manufacturer / dealer is not liable for any kind of incidental or indirect damages.