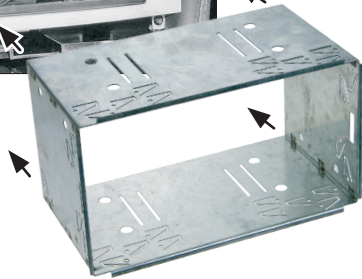


6. Place the facia plate on the dashboard.

Place the metal frame into the facia plate.

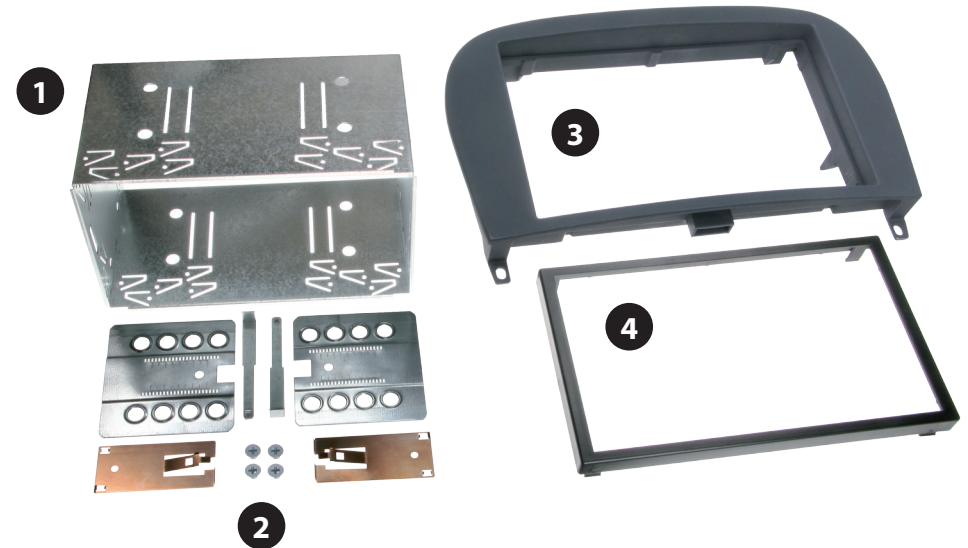


7. Connect all required circuit points to the head unit and push it into the metal frame until it snaps in. Place the trim frame.

Reinstall everything in reverse order to finish installation.

• Mercedes SL-Class (R230) 2004 →

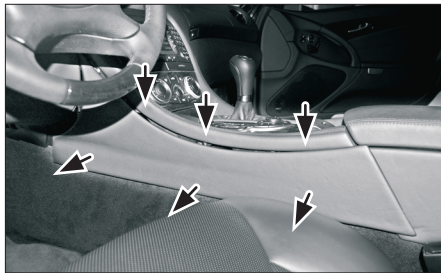
Compatible with double DIN devices



Double DIN Set contents

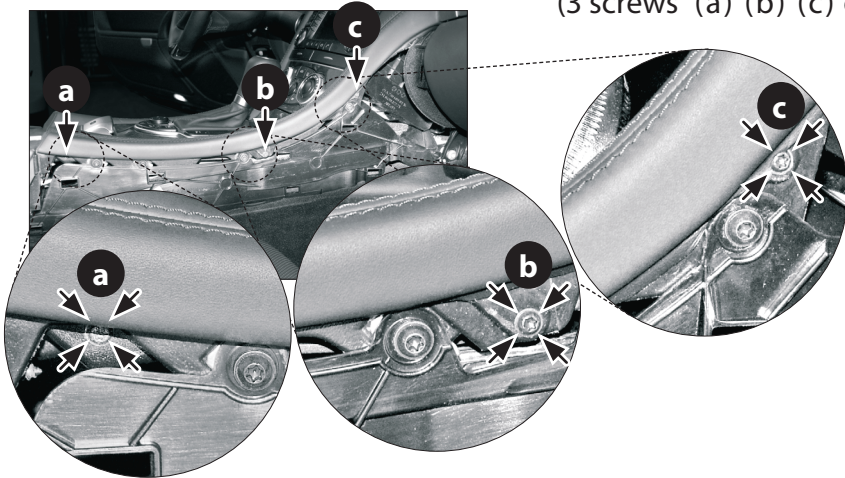
- (1) Metal Frame
- (2) Installation Kit

- (3) Facia Plate
- (4) Trim Frame



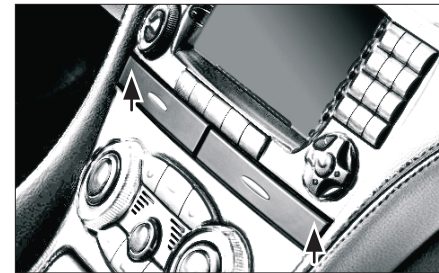
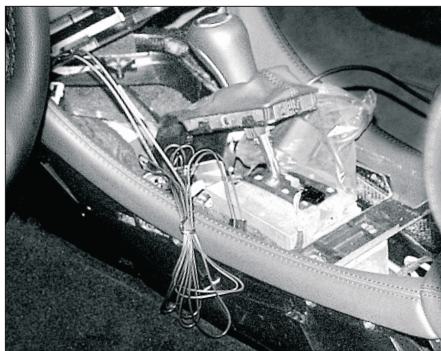
1. Remove the side panels at each side by pulling them towards your direction.

2. Remove the 6 Torx (TX20) screws. (3 screws (a) (b) (c) on each side)



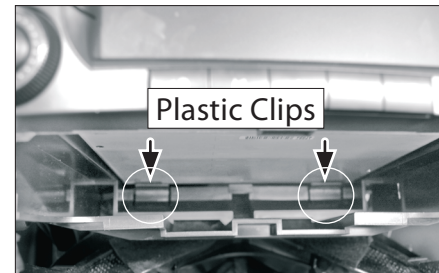
3. Remove the middle part of the centre console.

Disconnect all plugs.



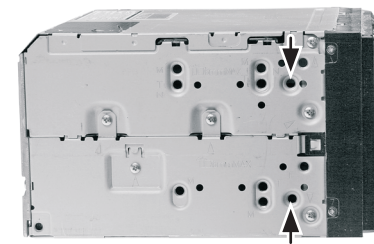
4. Open both cup holders. Remove the 2 Torx TX20 screws (which become visible after removing the centre console)

Remove the cup holders.



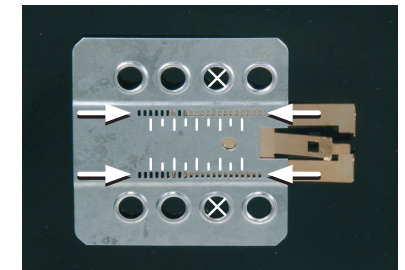
5. Press the 2 plastic clips (see arrows) located under the OEM-Radio.

Remove the OEM-Radio.



(sample photo)

Mount the metal brackets to the double DIN head unit



(sample photo)

The position of the copper coloured holder can be adjusted to your needs for perfect fit. (see sample)

All installation work must be performed by a qualified professional installer only. The manufacturer / dealer is not liable for any kind of incidental or indirect damages.