

# BMW 5 Series

## 5-Series (Without NAV) 1997-2003

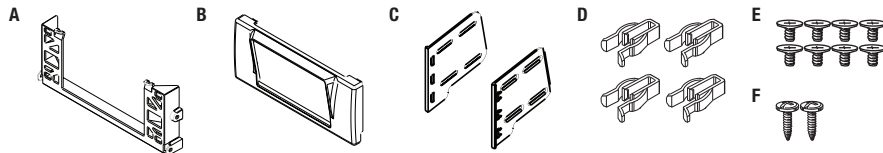
### M5 (Without NAV) 2000-2003

#### KIT FEATURES

- ISO DDIN radio provision
- ***Painted scratch resistant matte black***

#### KIT COMPONENTS

- A) ISO DDIN radio housing • B) ISO DDIN radio trim plate • C) ISO DDIN brackets • D) (4) Panel clips
- E) (8) ISO screws • F) (2) #8 x 1/2" Phillips screws



#### TOOLS REQUIRED

- Phillips Screwdriver • Torx T-10 Screwdriver • Panel Removal Tool • Cutting Tool or File • Socket Wrench

#### Table of Contents

Dash Disassembly .....	2-3
Kit Assembly	
– ISO DDIN radio provision .....	4



## Dash Disassembly

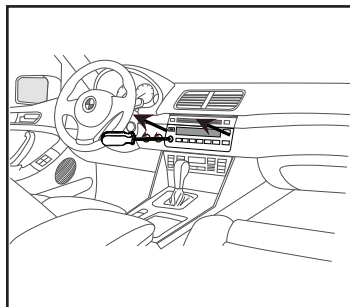
1. Remove the volume knob by pulling out towards the rear of the vehicle.
2. Turn the exposed screw 90° using a T-10 Torx screwdriver, pull out on the bottom of the radio, then unplug and remove the lower portion of the radio. (Figure A)

**Note:** Leave the Torx driver in place to aid in pulling out the radio.

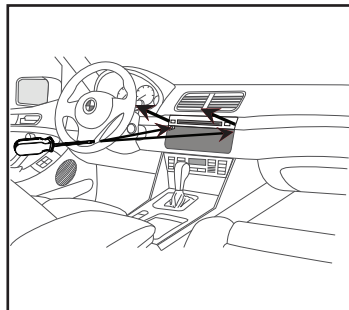
3. Remove the (2) T-10 Torx screws securing the top portion of the radio, then unplug and remove the radio. (Figure B)
4. Unclip and remove the wood trim panels above the glove box, and to the left of the radio. (Figure C)

5. Remove the (1) Phillips screw securing each side panel on the center console, and then slide the panels forward to unclip and remove them. (Figure D)
6. Open the glove box, and then unclip and remove the glove box side supports. (Figure E)

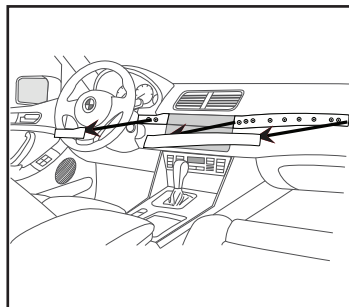
*Continued on the next page*



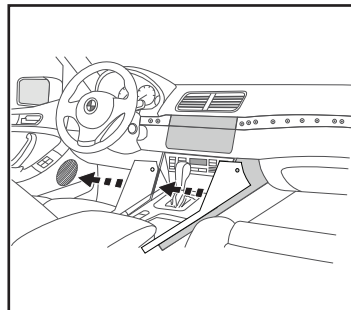
(Figure A)



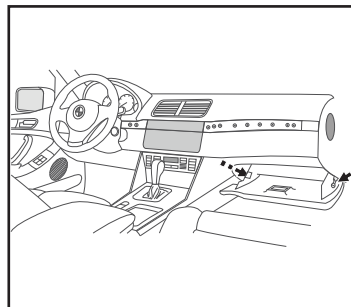
(Figure B)



(Figure C)



(Figure D)



(Figure E)

## Dash Disassembly

7. Remove the (2) Phillips screws securing the panel located inside the left side of the glove box cavity, and then remove the panel. (Figure F)

8. Remove the (3) Phillips screws securing the glove box to the lower dash panel, and then let the assembly hang. (Figure G)

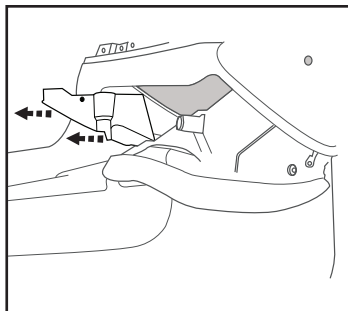
9. Remove the (4) Phillips screws above the glove box, the (1) behind the cover on the right side of the lower dash panel, and the (2) on the lower dash panel to the left of the radio. (Figure H)

10. Remove the (4) Phillips screws securing the radio sub-dash panel to the lower dash panel. (Figure I)

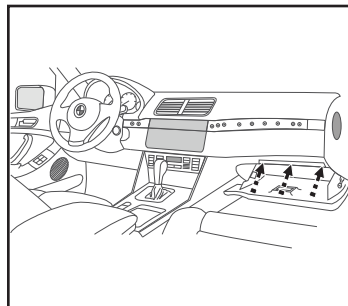
**Note:** These (4) screws will be reused in kit assembly.

11. Carefully pull the right side of the lower dash panel outward to gain access to the radio sub-dash panel, and then remove the radio sub-dash panel from the radio cavity. (Figure J)

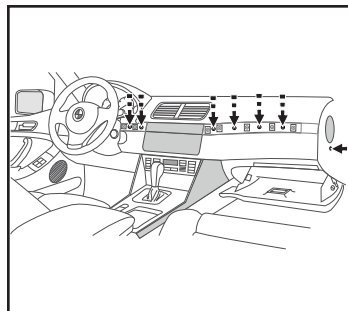
*Continue to kit assembly*



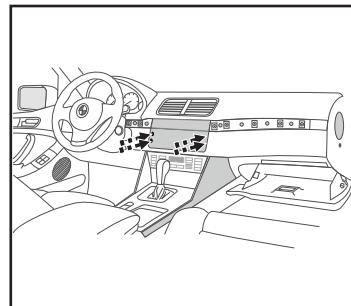
(Figure F)



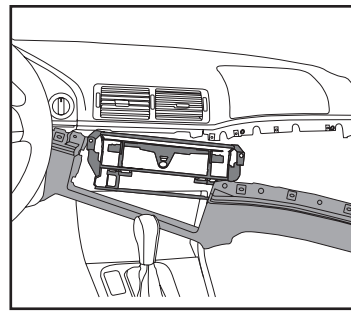
(Figure G)



(Figure H)



(Figure I)

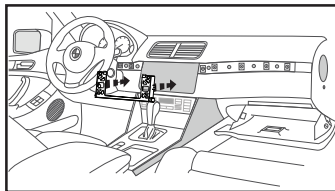


(Figure J)

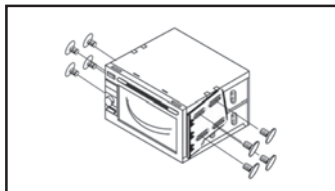
## Kit Assembly

### ISO DDIN radio provision

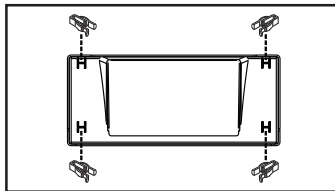
1. Secure the *ISO DDIN radio housing* into the radio cavity using the (4) factory screws removed in disassembly, and the (2) #8 x 1/2" Phillips screws supplied with the kit. (Figure A)
2. Secure the *radio brackets* to the radio using the (8) ISO screws supplied with the kit. (Figure B)
3. Locate the factory wiring harness and antenna connector in the dash and complete all necessary connections to the radio. Metra recommends using the proper mating adapter from Metra and/or AXXESS. Reconnect the negative battery terminal and test the radio for proper operation.
4. Slide the radio into the *radio housing* until it clicks in.
5. Attach the (4) *panel clips* supplied with the kit onto the legs of the *ISO DDIN radio trim plate*. (Figure C)
6. Attach the *ISO DDIN trim plate* over the radio.
7. Reassemble the dash in the reverse order of disassembly.



(Figure A)



(Figure B)



(Figure C)