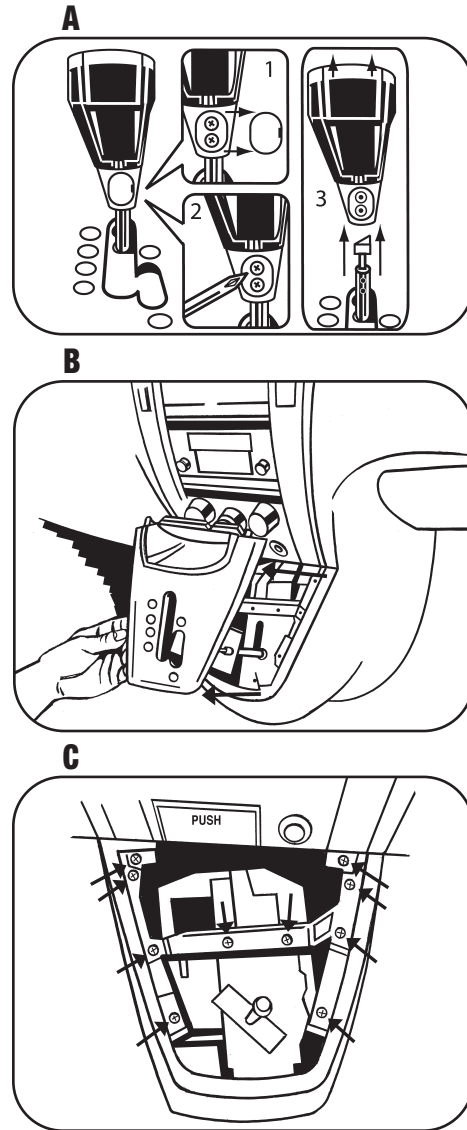


2005-2009 HYUNDAI TUCSON

- 1** Disconnect the negative battery terminal to prevent an accidental short circuit.
- 2** Remove screw cover from back side of shift knob and remove (2) Phillips screws. Lift straight up on shift knob to remove. (Figure A)
- 3** Unclip and remove shift knob trim panel. (Figure B)
- 4** Remove (10) Phillips screws from dash support under shift knob trim panel and remove. (Figure C)

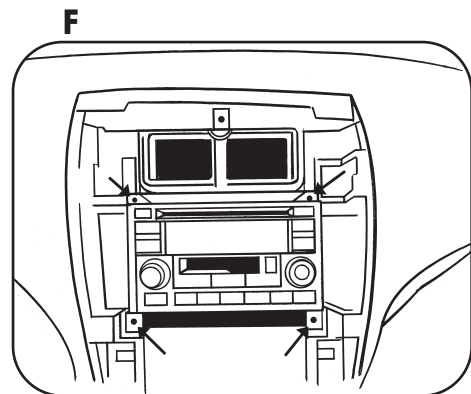
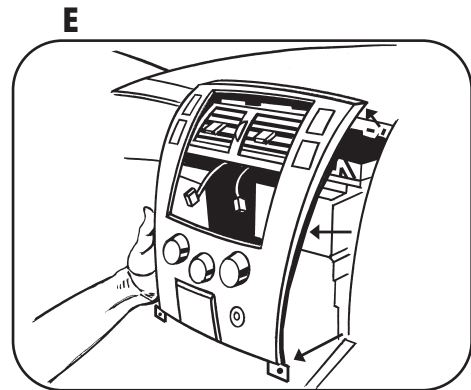
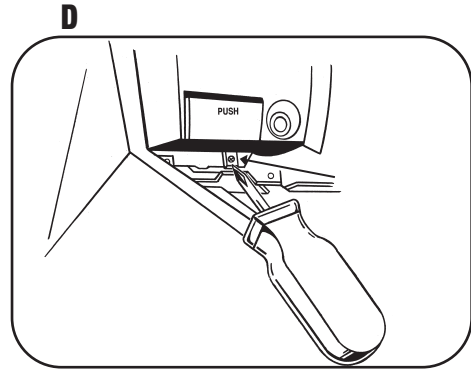


DASH DISASSEMBLY

2005-2009 HYUNDAI TUCSON

- 5 Remove (1) Phillips screw from bottom center of trim panel surrounding radio including a/c controls then unclip and remove panel. (Figure D-E)

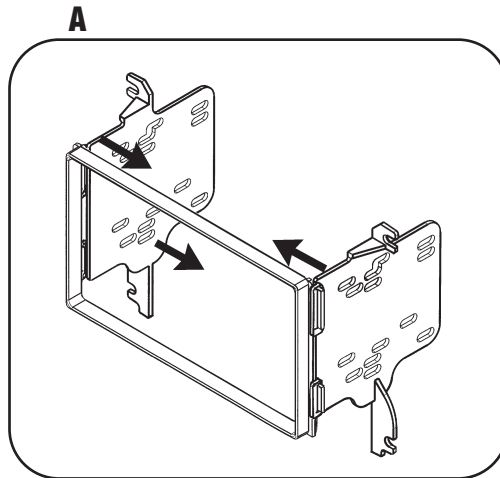
- 6 Remove (4) Phillips screws to remove radio. (Figure F)



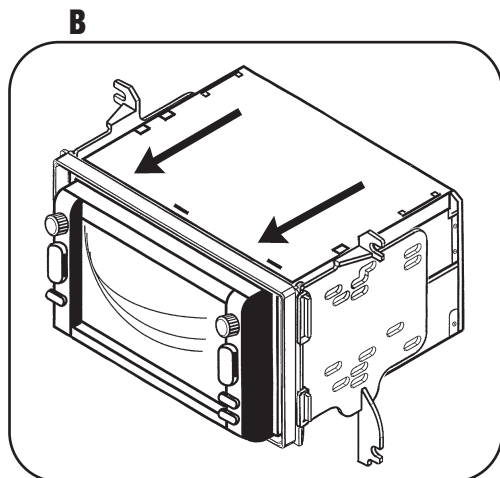
DOUBLE DIN HEAD UNIT PROVISION/ STACKED ISO DIN HEAD UNIT PROVISION

- 1** Locate the factory wiring harness in the dash. Re-connect the negative battery terminal and test the unit for proper operation.

- 2** Snap the Double DIN brackets to the Double DIN trim plate. (Figure A)



- 3** Slide the Double DIN head unit or stacked ISO head units into the bracket/trim plate assembly and secure the Double DIN head unit or stacked ISO head units to the assembly using the screws supplied with the radio. (Figure B)



- 4** Reassemble dash in reverse order of disassembly.

KIT ASSEMBLY