

Instruction Manual

Camera Interface for Land Rover (Dual Screen)

Model name	27-578
Released Date	2019-04-15
Manual Version	1.3
Language	English

Contents

1.Warning.....	3
2.Compatibility.....	5
3.Features.....	6
4.Specifications.....	7
5.Package Components.....	8
6.Wiring Diagram.....	9
7.DIP Switch Settings.....	11
8.Operation Instruction.....	13
9.DVR Switching.....	15
10.FPG Setting.....	16

Warning:

- In order to protect the driving safety and avoid break the traffic law; please DO NOT operate the interface while driving.
- The reversing surveillance function just is used in reversing assistance. Please check the entire surroundings while reversing.
- All steps of installation should be done by the well-trained specialist.
- During installation, the ignition key should be taken off and after all installation finished, connect power cable last.
- Please DO NOT plug or pull the connected cables in the state of power-on, in order to avoid damaged monitor or accessory.
- Install wiring so that they will not come in contact with metal parts. The wiring may be damaged by contact with metal parts, resulting in fire and shocks. Avoid all contact with hot surfaces when wiring the main unit. High temperatures may damage wiring, causing shorts, arcing and fires.

- Please DO NOT put the product in the damp environment or water, in order to avoid electric shock, damaged and fire accident caused by a short circuit.
- Check all components are in the box when receiving the product. If anything is missing, inform the supplier/manufacturer.
- Check the interface works properly with the engine running before re-installing all the wiring and appropriate fixings.
- Avoid scratching the instrument panel
- All connections must be insulated in order to short circuit.

2. Compatibility:

Brands	Model	Production Year	Original System
Land Rover	Velar	2018	Dual Screen 
	Discovery Sport	2018	
	Range Rover	2019	

3.Features:

- A. Support Intelligent Parking Assist System including PDC (Parking Distance Control) and FPG (Flexible Parking Guidelines)**
- B. Support further software update by TF Card**
- C. Support power Supply for rear view camera**
- D. Support power supply for DVR device**
- E. Support automatically switched to front view camera, auto trigger after R to D gear**

4. Specifications

A. Interface I/O Spec:

Input: CVBS *3 (Front/Rear View Camera, 360, Video), VGA *1 (Specific 360 Panoramic System)

Output: LVDS Output

B. Power Spec:

Input Power: 9V-16V

Consumption: 6W

C. Package Content:

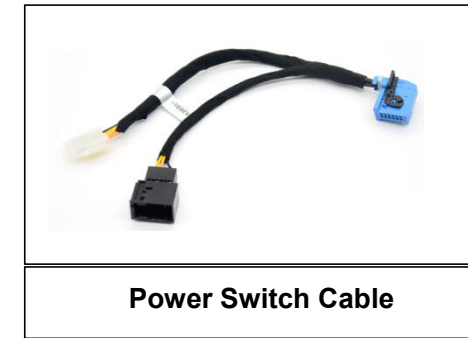
Interface Unit * 1

Main Power Harness * 1

LVDS Cable * 2

Power Switch Cable* 1

5.Package Components



Optional Components:



A black cable with a 3.5mm stereo jack on one end and a different connector on the other.

3.5mm AUX cable



A black cable with a USB-A connector on one end and a different connector on the other.

AUX-USB adapter

6. Wiring Diagram

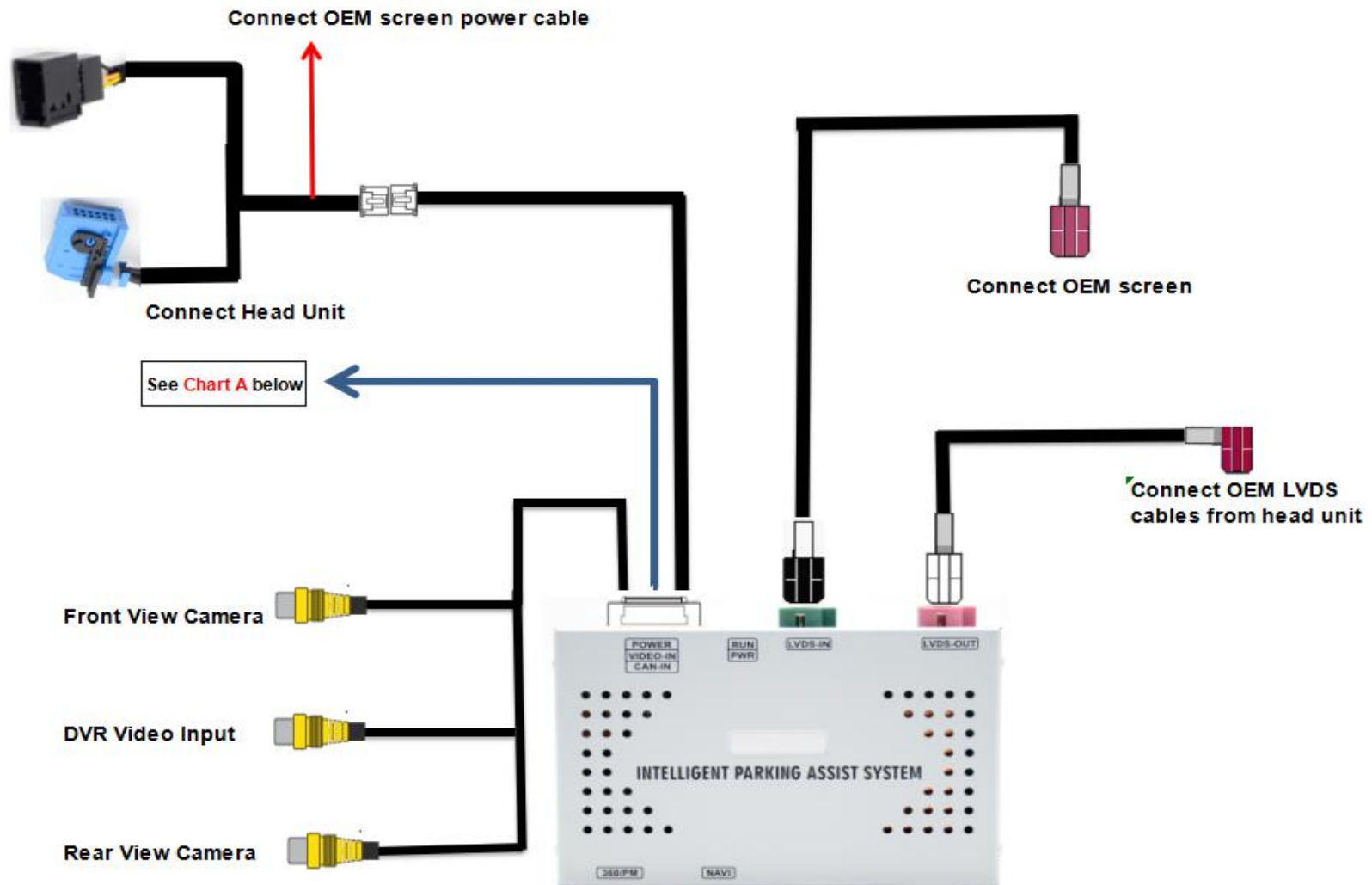
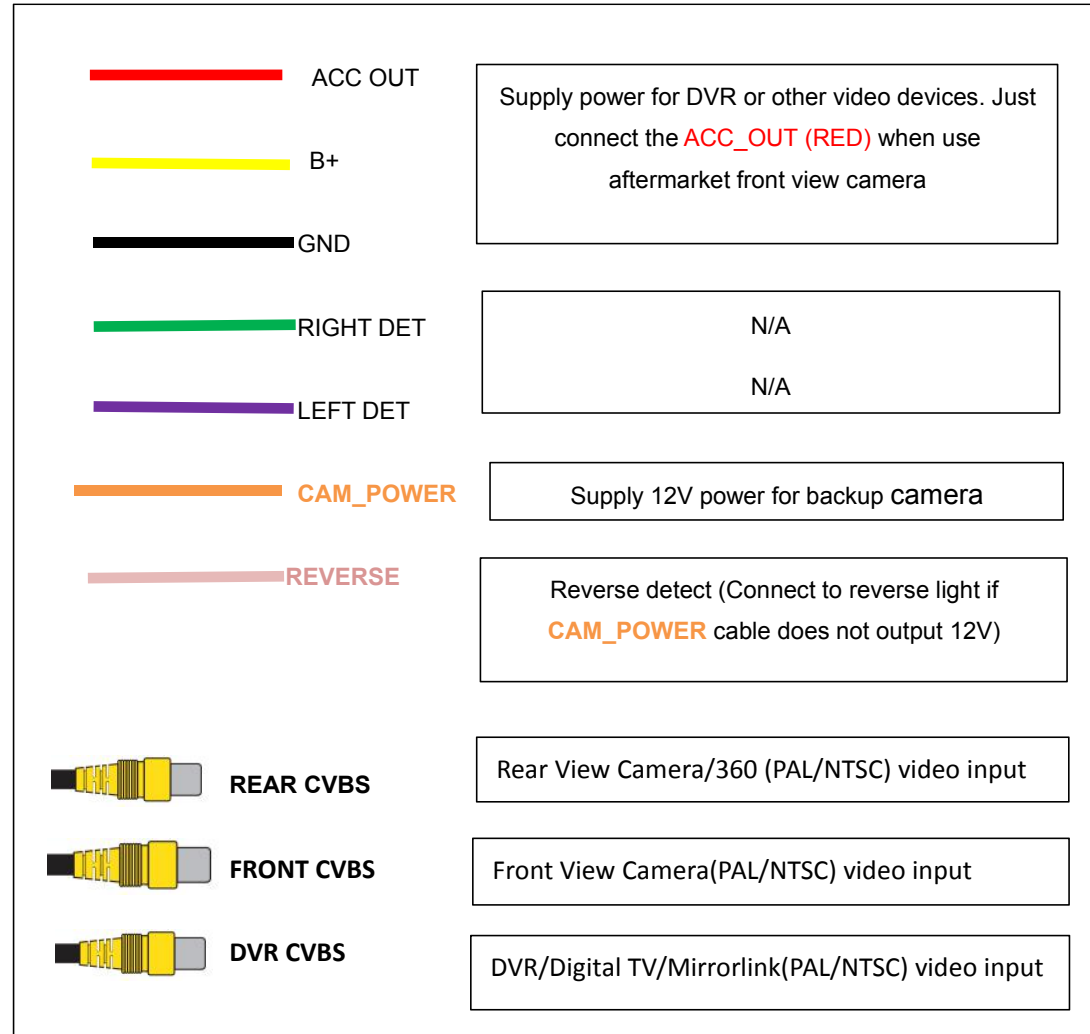


Chart A ↓

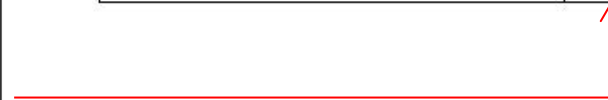


7.DIP Switch Settings



PIN	ON (▼)	OFF(▲)
1	Selection of car models	
2		
3		
4	Turn off PDC	Turn on PDC
5	Turn off FPG	Turn on FPG
6	Turn on 360	Turn off 360
7	Turn on front view	Turn off front view
8	Turn off rear view	Turn on rear view

Models	No.1	No.2	No.3
2018 Ranger Rover/Range Rover Sport/Velar(Dual Screen)	ON (▼)	ON (▼)	OFF(▲)

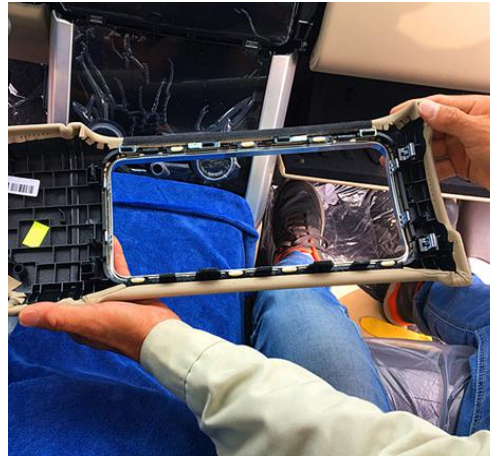


8. Operation Instruction

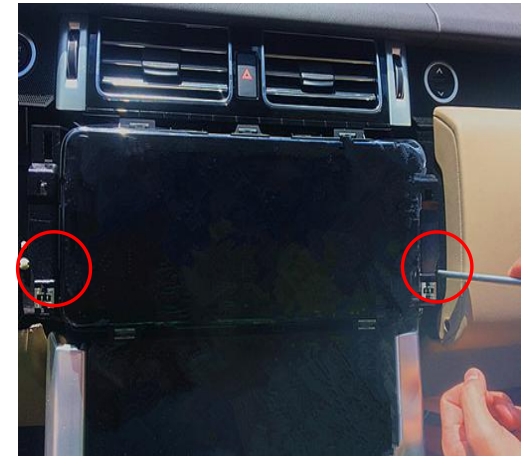
- Note: Please use the protective measures, avoid damaging the original car accessories



1. Take off the OEM screen



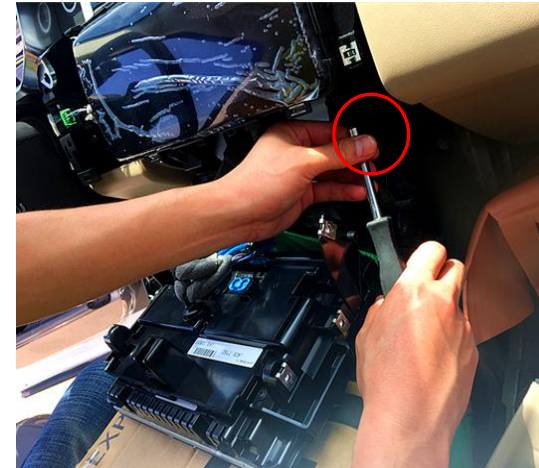
2. It shows the OEM screen frame



3. Take out the two screws



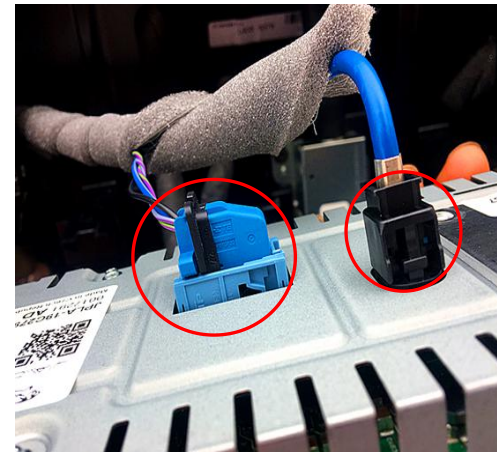
4. Take out the two sides screws of OEM below screen



5. Take out the screws from the bottom of OEM up screen



6. It shows OEM up screen



7. Connect the LVDS and power cables to the OEM screen

9. DVR Switching



1. Long press 5 seconds to enter DVR by three fingers



2. Click black area to exit DVR

10. FPG setting



**Please long press the screen until the guide line flashing.
Then you can drag the guide line to any position of the screen.**

InCarTec

Website: www.incartec.co.uk

E-Mail: sales@incartec.co.uk